

APP CRS	Rwy Idg	8579
124°	TDZE	8
	Apt Elev	9

# RNAV (RNP) Y RWY 12

MIAMI INTL (MIA)

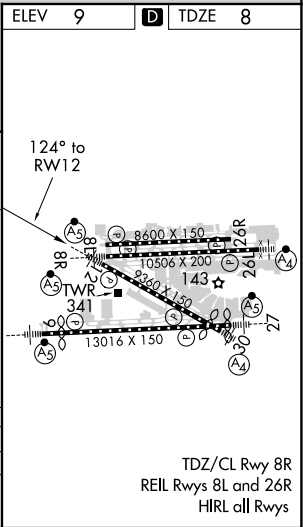
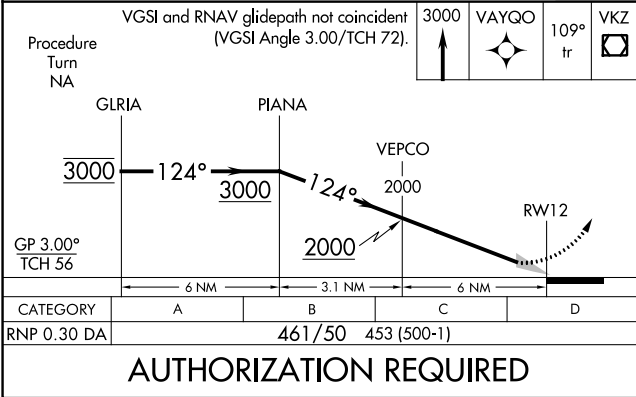
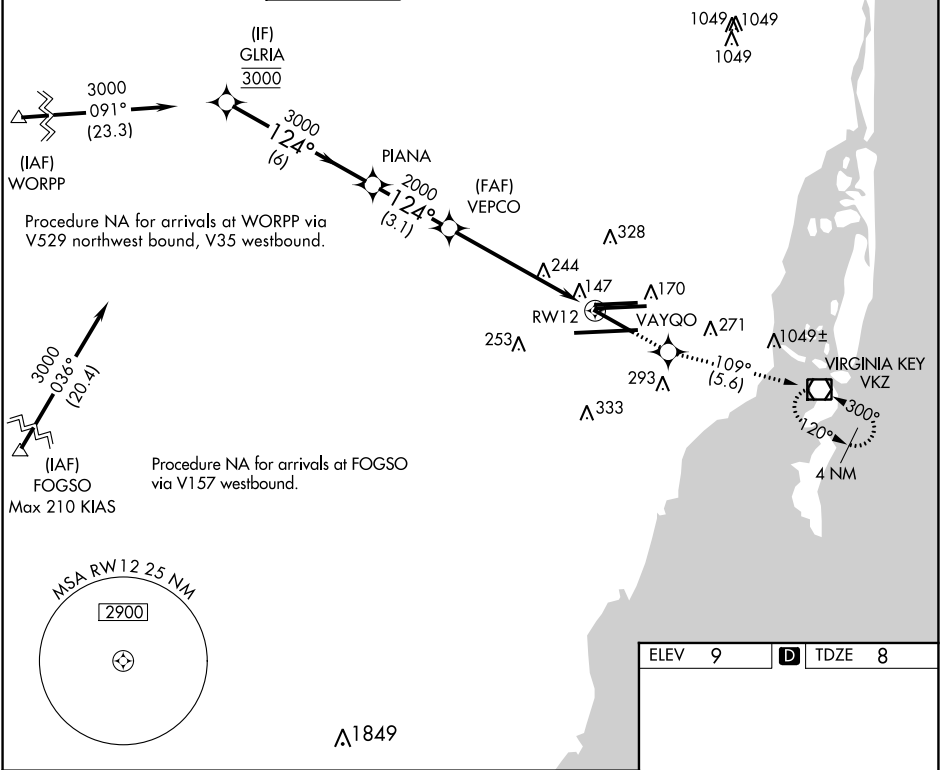
**GPS Required.** For inoperative MALSR, increase 0.30 all Cats visibility to 1½. For uncompensated Baro-VNAV systems, procedure NA below 6°C (42°F) or above 49°C (120°F).

**NA**

**MALSR**

**MISSED APPROACH:** Climb to 3000 direct VAYQO and via 109° track to VKZ VOR/DME and hold, continue climb-in-hold to 3000.

D-ATIS	MIAMI APP CON	MIAMI TOWER	GND CON	CLNC DEL	CPDLC
ARR 119.15	124.85 322.3	118.3 256.9	121.8 (8L/8R/12/26L/26R)	135.35	
DEP 133.675			127.5 (9/27/30)	348.6	



SE-3, 31 DEC 2020 to 28 JAN 2021

SE-3, 31 DEC 2020 to 28 JAN 2021