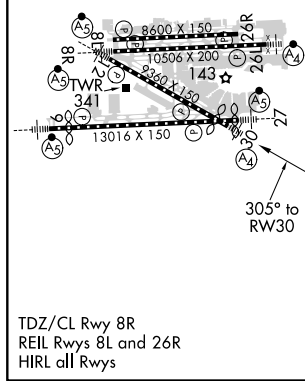
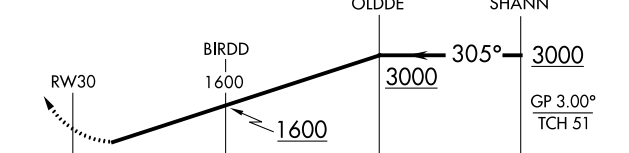


19115

RNAV (RNP) Y RWY 30
MIAMI INTL (MIA)

	D-ATIS	MIAMI APP CON		MIAMI TOWER		GND CON		CLNC DEL	CPDLC
ARR DEP	119.15 133.675	124.85	322.3	118.3	256.9	121.8 127.5	(8L/8R/12/26L/26R) (9/27/30)	348.6 135.35	



3000 ↑	VEPCO ✦	342° tr	BRBRA ✦	VGS1 and RNAV glidepath not coincident (VGS1 Angle 3.00/TCH 71).			Procedure Turn NA	
				OLDDE SHANN				
				305°		3000	GP 3.00° TCH 51	
RW30				BIRDD				
1600				1600				
4.8 NM				4.4 NM		6.1 NM		
CATEGORY		A		B		C		D
RNP 0.23 DA		426-1¼		418 (500-1¼)				
RNP 0.30 DA		521-1½		513 (600-1½)				
AUTHORIZATION REQUIRED								

MIAMI INTL (MIA)
RNAV (RNP) Y RWY 30

SE-3, 31 DEC 2020 to 28 JAN 2021