

RNAV (GPS) Z RWY 12  
MIAMI INTL (MIA)

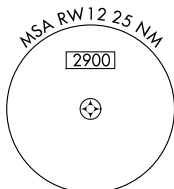
MALSR

**MISSED APPROACH:** Climb to 3000 direct VAYQO and via 109° track to VKZ VOR/DME and hold, continue climb-in-hold to 3000.

	D-ATIS	MIAMI APP CON		MIAMI TOWER		GND CON		CLNC DEL	CPDLC
ARR DEP	<b>119.15</b> <b>133.675</b>	<b>124.85</b>	<b>322.3</b>	<b>118.3</b>	<b>256.9</b>	<b>121.8</b> <b>127.5</b>	(8L/8R/12/26L/26R) (9/27/30) <b>348.6</b>	<b>135.35</b>	

[illegible]

### Procedure NA for arrivals at FOGSO via V157 westbound.

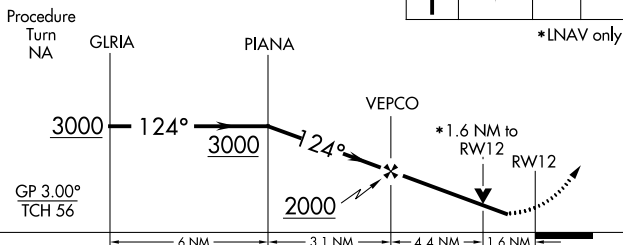


ELEV	9	<b>D</b>	TDZE	8
------	---	----------	------	---

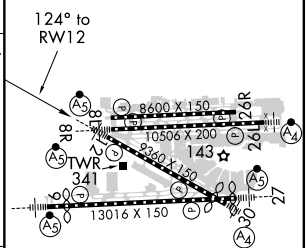
VGSI and RNAV glidepath not coincident  
(VGSI Angle 3.00/TCH 72).



\*LNAV only.



CATEGORY		A	B	C	D
LPV	DA	390/40		382 (400-¾)	
LNAV/ VNAV	DA	506/60		498 (500-1¼)	
LNAV	MDA	600/40 592 (600-¾)		600/50 592 (600-1)	600/60 592 (600-1¼)



TDZ/CL Rwy 8R  
REIL Rwy 8L and 26R  
HRI all Rwy 8

SE-3, 31 DEC 2020 to 28 JAN 2021