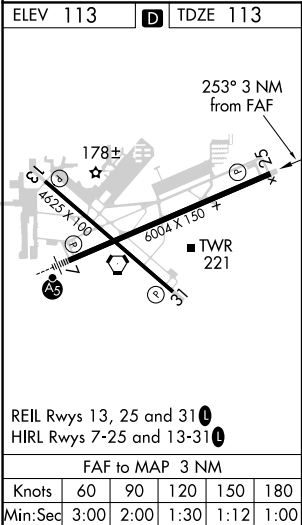
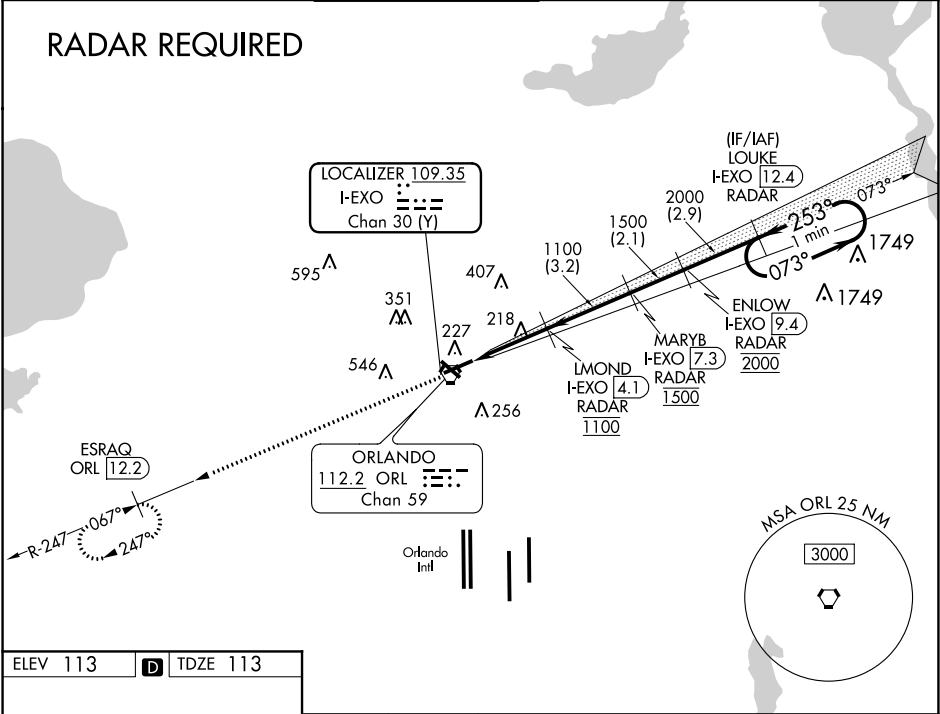


LOC/DME I-EXO <b>109.35</b> Chan <b>30(Y)</b>	APP CRS <b>253°</b>	Rwy Idg TDZE <b>113</b> Apt Elev <b>113</b>	<b>6004</b>
---	------------------------	---	-------------

ILS or LOC RWY 25  
EXECUTIVE (ORL)

DME or RADAR required.		MISSED APPROACH: Climb to 2000 on ORL VORTAC R-247 to ESRQAQ/ORL VORTAC 12.2 DME and hold.			
⚠ Circling Rwy 31 NA at night. In minimum visibility conditions, bright lights on highway ½ mile south of airport may be mistaken for runway lights.					
ATIS <b>127.25</b>	ORLANDO APP CON <b>124.8 351.9</b>	EXECUTIVE TOWER ★ <b>118.7 (CTAF) 0 239.0</b>	GND CON <b>121.4 239.0</b>	CLNC DEL <b>128.45</b>	UNICOM <b>122.95</b>



2000 ↑ ESRQAQ ORL 12.2		One Minute Holding Pattern			
*LOC only.					
*I-EXO 2.2					
I-EXO 1.2					
LMOND I-EXO 4.1 RADAR 1100					
MARYB I-EXO 7.3 RADAR 1500					
ENLOW I-EXO 9.4 RADAR 2000					
LOUKE I-EXO 12.4 RADAR 2500					
253°		2800			
GS 3.00°		TCH 46			
1 NM		2 NM			
3.2 NM		2.1			
2.9 NM					
CATEGORY	A	B	C	D	
S-ILS 25	313-¾ 200 (200-¾)				
S-LOC 25	500-1	387 (400-1)	500-1½	387 (400-1½)	
Ⓢ CIRCLING	580-1 467 (500-1)	680-1 567 (600-1)	860-2¼ 747 (800-2¼)	860-2½ 747 (800-2½)	