

WAAS CH 70729 W07A	APP CRS 073°	Rwy Idg TDZE 109 Apt Elev 113
----------------------------------------	------------------------	---------------------------------------------------

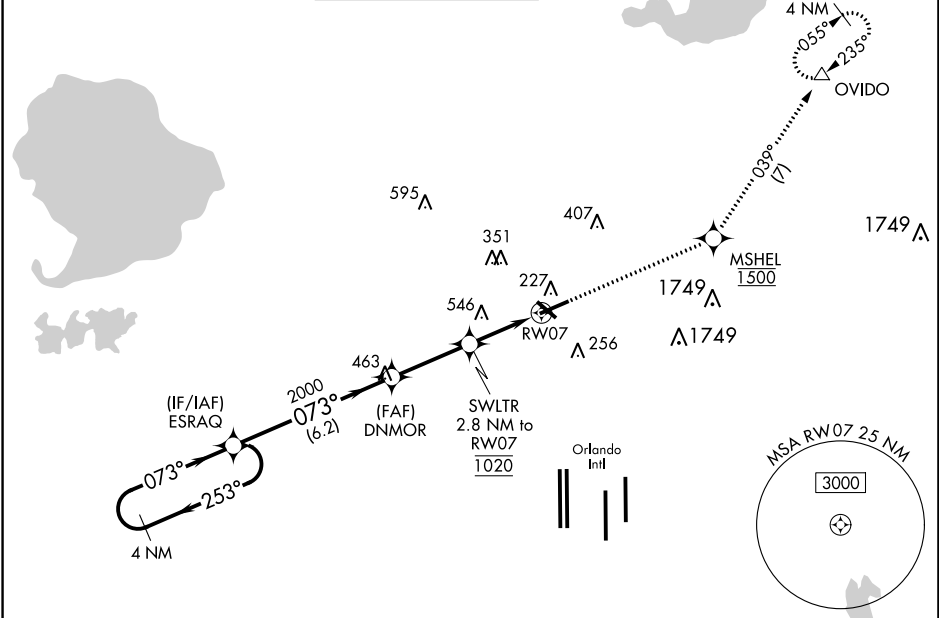
RNAV (GPS) RWY 7
EXECUTIVE (ORL)

RNP APCH

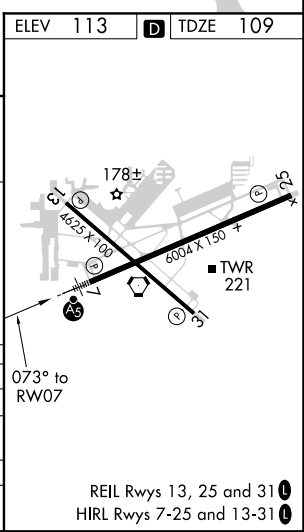
For uncompensated Baro-VNAV systems, LNAV/VNAV NA below 2°C or above 54°C. Circling Rwy 31 NA at night. For inop ALS, increase LPV all Cats visibility to RVR 4500, increase LNAV/VNAV all Cats visibility to RVR 5000, increase LNAV Cat A/B visibility to RVR 5500 and Cats C/D to 1¼ SM. In minimum visibility conditions, bright lights on highway ½ mile south of airport may be mistaken for runway lights. Rwy 7 helicopter visibility reduction below ¾ SM NA.

MALSR
MISSED APPROACH: Climb to 1500 direct MSHEL, cross MSHEL at 1500, then climb to 1600 on track 039° to OVIDO and hold.

ATIS 127.25	ORLANDO APP CON 124.8 351.9	EXECUTIVE TOWER ★ 118.7 (CTAF) 0 239.0	GND CON 121.4 239.0	CLNC DEL 128.45	UNICOM 122.95
-----------------------	---------------------------------------	--------------------------------------------------	-------------------------------	---------------------------	-------------------------



ELEV 113		TDZE 109	
4 NM Holding Pattern		1500 MSHEL 1500 1600 tr 039° OVIDO	
2000 ← 253° 073° → 2000		SWLTR 2.8 NM to RW07 *LNAV only.	
GP 3.00° TCH 52		*1020	
6.2 NM		3 NM	
A		B	
LPV DA		391/40 282 (300-¾)	
LNAV/VNAV DA		447/40 338 (400-¾)	
LNAV MDA		740-40 631 (700-¾)	
CIRCLING		860-2¼ 860-2½	
740-1 627 (700-1)		747 (800-2¼) 747 (800-2½)	



SE-3, 31 DEC 2020 to 28 JAN 2021

SE-3, 31 DEC 2020 to 28 JAN 2021