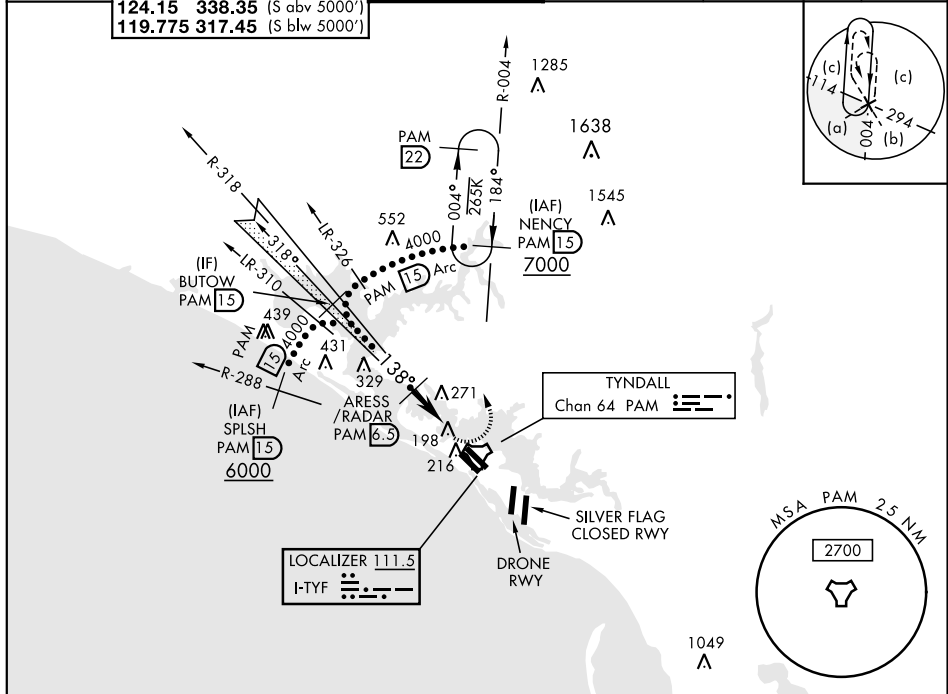


HI-ILS or LOC Y RWY 14L

LOC I-TYF 111.5	APCH CRS 138°	Rwy Idg 10,008 TDZE 14 Arpt Elev 17	JAL-312 [USAF]	TYNDALL AFB (KPAM)
---------------------------	-------------------------	--	----------------	--------------------

DME or RADAR required	ALSIF-1 	MISSED APPROACH: Climbing left turn to 3000, intercept PAM TACAN R-004 to 1.5 DME (NENCY) and hold.
-----------------------	-------------	---

ATIS ★ 254.4	TYNDALL APP CON 125.2 392.1 (N abv 5000') 120.825 379.3 (N blw 5000') 124.15 338.35 (S abv 5000') 119.775 317.45 (S blw 5000')	TYNDALL TOWER ★ 133.95 263.15	GND CON 121.9 259.3	CLNC DEL 118.05 348.7	ASR/PAR
------------------------	--	---	-------------------------------	---------------------------------	---------



EMERG SAFE ALT 100 NM 3300

<p>BUTOW 15</p> <p>4000</p> <p>138°</p> <p>ARESS /RADAR 6.5</p> <p>1600</p> <p>5.3 NM</p> <p>5 NM</p> <p>CUTMI 1.2</p> <p>TACAN</p> <p>GS 2.50° TCH 49</p>				<table><tr><td>3000</td><td>NENCY PAM 15</td></tr></table> <p>↑ LOC ONLY</p>		3000	NENCY PAM 15	<p>95</p> <p>138° 5.8 NM from FAF</p> <p>HIRL all Rwy 32L Idg 9135'</p> <p>14L 14R 32L 32R</p> <p>10.008 10.113 150 200</p> <p>76 131 122 173 148 158</p> <p>TWR 148</p>												
3000	NENCY PAM 15																			
CATEGORY		C	D	E	Recommend Rwy 14L-32R for apch end engagement of A-Gear.															
S-ILS 14L *		214/24		200	(200-½)		FAF to MAP 5.3 NM													
S-LOC 14L **		420/40		406	(500-¾)		<table><tr><td>Knots</td><td>120</td><td>140</td><td>160</td><td>180</td><td>200</td></tr><tr><td>Min:Sec</td><td>2:39</td><td>2:16</td><td>1:59</td><td>1:46</td><td>1:35</td></tr></table>		Knots	120	140	160	180	200	Min:Sec	2:39	2:16	1:59	1:46	1:35
Knots	120	140	160	180	200															
Min:Sec	2:39	2:16	1:59	1:46	1:35															
CIRCLING		560-1½ 543 (600-1½)		580-2 563 (600-2)	620-2¼ 603 (700-2¼)															

HI-ILS or LOC Y RWY 14L