

HI-TACAN Y RWY 14L

TACAN PAM Chan 64	APCH CRS 130°	Rwy ldg 10,008 TDZE 14 Arpt Elev 17
-----------------------------	-------------------------	--

JAL-312 [USAF]

TYNDALL AFB (KPAM)

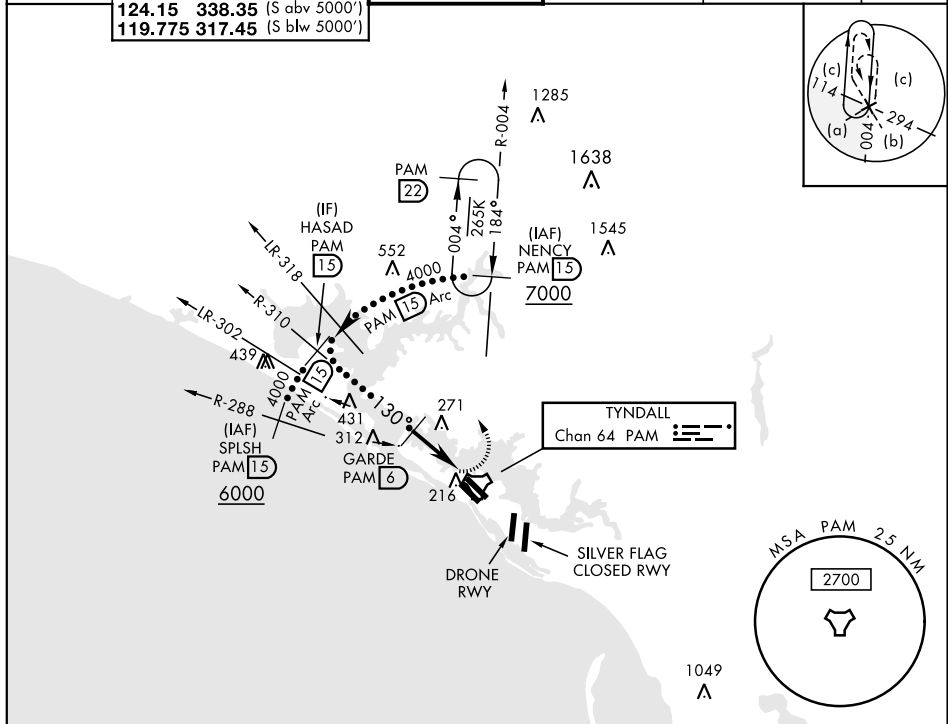
V

* When ALS inop, increase vis to 1½ miles.

ALSF-1

MISSED APPROACH: Turn left climbing to 3000, intercept PAM TACAN R-004 to 15 DME (NENCY) and hold.

ATIS ★ 254.4	TYNDALL APP CON 125.2 392.1 (N abv 5000') 120.825 379.3 (N blw 5000') 124.15 338.35 (S abv 5000') 119.775 317.45 (S blw 5000')	TYNDALL TOWER ★ 133.95 263.15	GND CON 121.9 259.3	CLNC DEL 118.05 348.7	ASR/PAR
------------------------	--	---	-------------------------------	---------------------------------	---------



EMERG SAFE ALT 100 NM 3300

Diagram illustrating the flight path and navigation aids for HI-TACAN Y RWY 14L. Key features include:

- Waypoints: HASAD (PAM 15), GARDE (PAM 6), WEGAP (PAM 1.2), NENCY (PAM 15).
- Altitudes: 4000, 1600, 3000, 2700, 1049.
- Navigation Aids: TACAN, VORTAC, DME.
- Obstacles: 1285, 1638, 1545, 7000, 6000, 2700, 1049.
- Runway: TYNDALL Chan 64 PAM, SILVER FLAG CLOSED RWY.

CATEGORY	C	D	E
S-14L*	480/50	466	(500-1)
CIRCLING	560-1½ 543 (600-1½)	580-2 563 (600-2)	620-2¼ 603 (700-2¼)

ELEV 17 TDZE 14

Diagram illustrating the flight path and navigation aids for HI-TACAN Y RWY 14L. Key features include:

- Waypoints: HASAD (PAM 15), GARDE (PAM 6), WEGAP (PAM 1.2), NENCY (PAM 15).
- Altitudes: 4000, 1600, 3000, 2700, 1049.
- Navigation Aids: TACAN, VORTAC, DME.
- Obstacles: 1285, 1638, 1545, 7000, 6000, 2700, 1049.
- Runway: TYNDALL Chan 64 PAM, SILVER FLAG CLOSED RWY.

Recommend Rwy 14L-32R for apch end engagement of A-Gear.

HI-TACAN Y RWY 14L