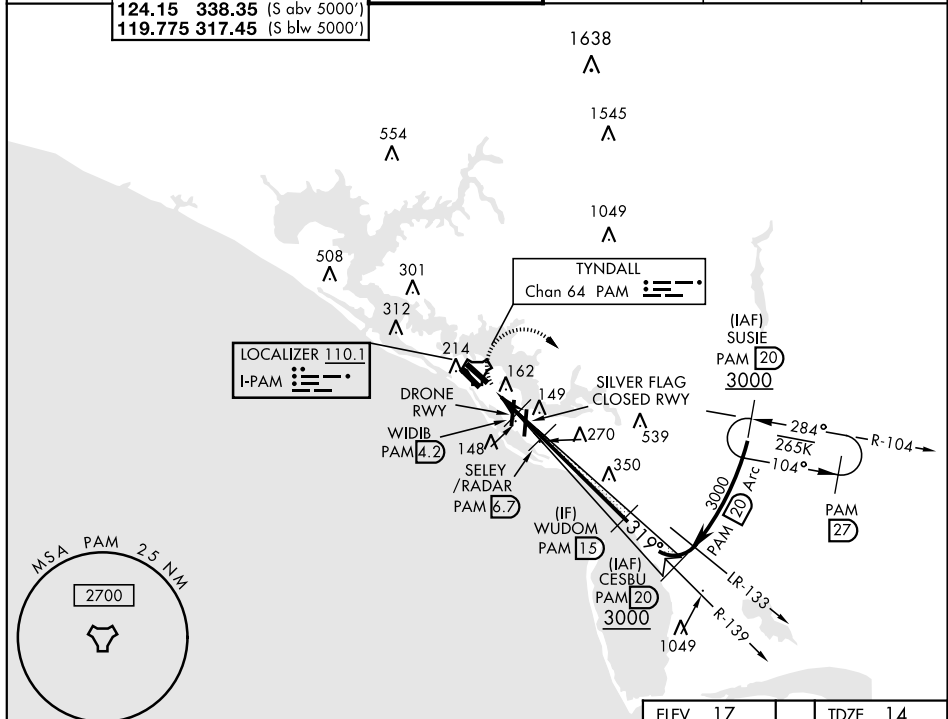
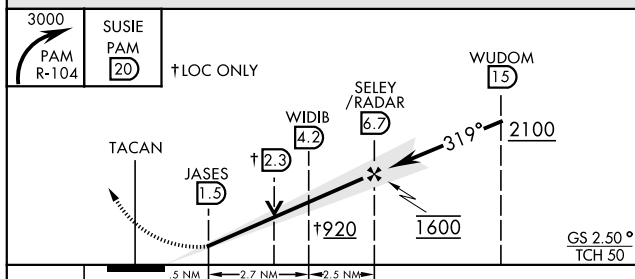


ILS or LOC Z RWY 32R

LOC I-PAM 110.1		APCH CRS 319°		Rwy Idg 10,008 TDZE 14 Arpt Elev 17	AL-312 [USAF]		TYNDALL AFB (KPAM)	
DME or RADAR required <div> <div>▼</div> <div> * When ALS inop, increase RVR to 40, vis to ¾ mile. ** When ALS inop, increase CAT AB RVR to 55, vis to 1 mile, CAT CDE RVR to 60, vis to 1 ½ miles. </div> </div>					ALSF-1 		MISSED APPROACH: Climbing right turn to 3000, intercept PAM TACAN R-104 to 20 DME (SUSIE) and hold.	
ATIS ★ 254.4	TYNDALL APP CON 125.2 392.1 (N abv 5000') 120.825 379.3 (N b/w 5000')			TYNDALL TOWER ★ 133.95 263.15		GND CON 121.9 259.3		CLNC DEL 118.05 348.7
								ASR/PAR



EMERG SAFE ALT 100 NM 3300



CATEGORY	A	B	C	D	E
S-ILS 32R*	214/24		200	(200-½)	
S-LOC 32R**	420/24	406 (500-½)	420/40		406 (500-¾)
C CIRCLING	540-1	523 (600-1)	560-1½ 543 (600-1½)	580-2 563 (600-2)	620-2¼ 603 (700-2¼)

