

PANAMA CITY, FLORIDA

RNAV (GPS) RWY 14L

WAAS CH 71271 W14A	APCH CRS 138°	Rwy ldg 10,008 TDZE 14 Arpt Elev 17
--------------------------	------------------	---

AL-312 (USAF)

TYNDALL AFB (KPAM)

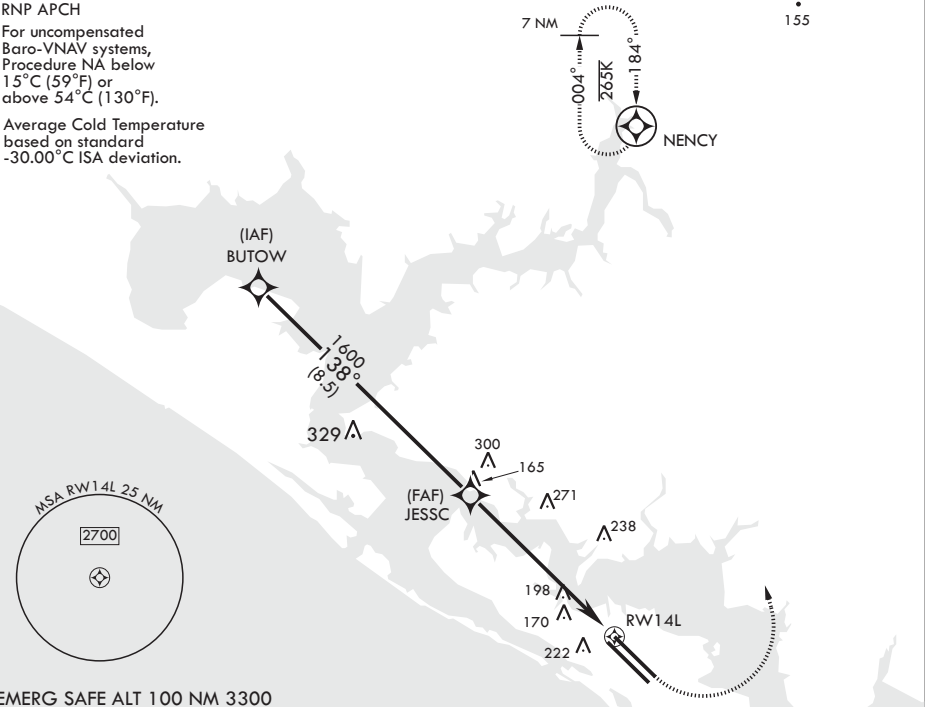
<p>⚠ * When ALS inop increase RVR to 40, vis to 3/4 mile. ** When ALS inop increase RVR to 60, vis to 1 1/8 miles. *** When ALS inop increase CAT AB RVR to 55, vis to 1 mile, CAT CDE RVR to 60, vis to 1 1/8 miles.</p>	<p>ALSF-1 </p>	<p>MISSED APPROACH: Climb to 600 then climbing left turn to 3000 direct NENCY and hold.</p>
--	---	---

ATIS★ 254.4	APP CON/DEP CON 119.775 317.45 BLW 5000' 124.15 338.35 ABV 5000'	TOWER★ 133.95 263.15	GND CON 121.9 259.3	CLNC DEL 118.05 348.7	ASR/PAR
----------------	--	-------------------------	------------------------	--------------------------	---------

RNP APCH

For uncompensated
Baro-VNAV systems,
Procedure NA below
15°C (59°F) or
above 54°C (130°F).

Average Cold Temperature
based on standard
-30.00°C ISA deviation.



EMERG SAFE ALT 100 NM 3300

BUTOW		600	3000	NENCY	ELEV 17	TDZE 14
3000		138°	JESSC	↑ LNAV only	138° to RWY 14L	Rwy 32L ldg 9135'
GP 2.50° TCH 50		1600	↑ 1.3 NM to RWY 14L	RWY 14L	10,008 x 200	10,113 x 150
		5.8 NM			TWR 148	32L 32R
CATEGORY	A	B	C	D	E	
LPV DA*	214/24		200	(200-1/2)		
LNAV/VNAV DA**	420/40		406	(500-3/4)		
LNAV MDA***	420/24 406 (500-1/2)		420/40	406	(500-3/4)	
CIRCLING	540-1 523 (600-1)		560-1 1/2 543 (600-1 1/2)	580-2 563 (600-2)	620-2 1/4 603 (700-2 1/4)	HIRL all Rwy's Recommend Rwy 14L-32R for apch end engagement of A-Gear.

PANAMA CITY, FLORIDA

30°04'N - 85°34'W

TYNDALL AFB (KPAM)

Amdt 3 08OCT20

RNAV (GPS) RWY 14L

SE-3, 31 DEC 2020 to 28 JAN 2021

SE-3, 31 DEC 2020 to 28 JAN 2021