

PANAMA CITY, FLORIDA

RNAV (GPS) RWY 14R

WAAS CH 71278 W14B	APCH CRS 138°	Rwy Idg 10,113 TDZE 15 Arpt Elev 17
--------------------------	------------------	-------------------------------------------

AL-312 (USAF)

TYNDALL AFB (KPAM)

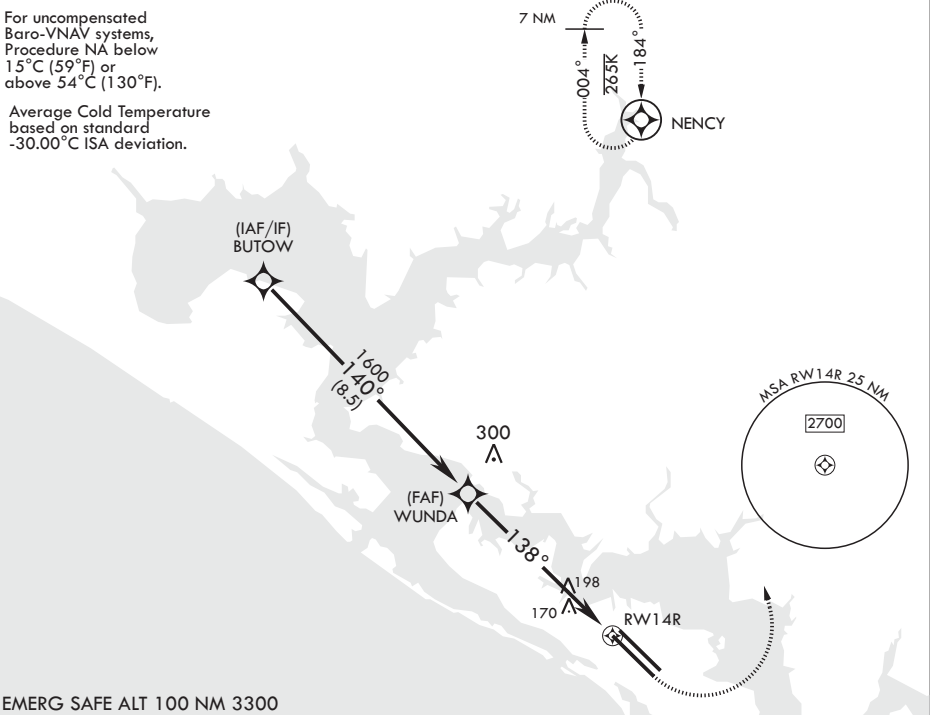
ATIS ★ 254.4		APP CON/DEP CON 119.775 317.45 BLW 5000' 124.15 338.35 ABV 5000'		TOWER ★ 133.95 263.15		GND CON 121.9 259.3		CLNC DEL 118.05 348.7		ASR/PAR	
------------------------	--	-------------------------------------------------------------------------------	--	---------------------------------	--	-------------------------------	--	---------------------------------	--	----------------	--

MISSED APPROACH: Climb to 600 then climbing left turn to 3000 direct NENCY and hold.

RNP APCH

For uncompensated Baro-VNAV systems, Procedure NA below 15°C (59°F) or above 54°C (130°F).

Average Cold Temperature based on standard -30.00°C ISA deviation.



EMERG SAFE ALT 100 NM 3300

BUTOW		VGSi and RNAV glidepath not coincident (VGSi angle 2.50/TCH 36).		600	3000	NENCY	ELEV 17	TDZE 15
3000		140°		*LNAV only		138° to RWY 14R		Rwy 32L Idg 9135'
GP 2.50° TCH 45		WUNDA		*1.6 NM to RWY 14R		RWY 14R		
		1600		5.8 NM				
CATEGORY	A	B	C	D	E			
LPV DA	215-¾		200	(200-¾)				
LNAV/VNAV DA	455-1¼		440	(500-1¼)				
LNAV MDA	480-1	465 (500-1)	480-1⅓	465 (500-1⅓)				
CIRCLING	540-1	523 (600-1)	560-1½ 543 (600-1½)	580-2 563 (600-2)	620-2¼ 603 (700-2¼)	HIRL all Rwy's Recommend Rwy 14L-32R for apch end engagement of A-Gear.		

PANAMA CITY, FLORIDA

30°04'N - 85°34'W

TYNDALL AFB (KPAM)

Amdt 2 08OCT20

RNAV (GPS) RWY 14R

SE-3, 31 DEC 2020 to 28 JAN 2021

SE-3, 31 DEC 2020 to 28 JAN 2021