

PANAMA CITY, FLORIDA

RNAV (GPS) RWY 32L

WAAS CH 71279 W32B	APCH CRS 319°	Rwy ldg TDZE Arpt Elev	9135 17 17
--------------------------	------------------	------------------------------	------------------

AL-312 (USAF)

TYNDALL AFB (KPAM)

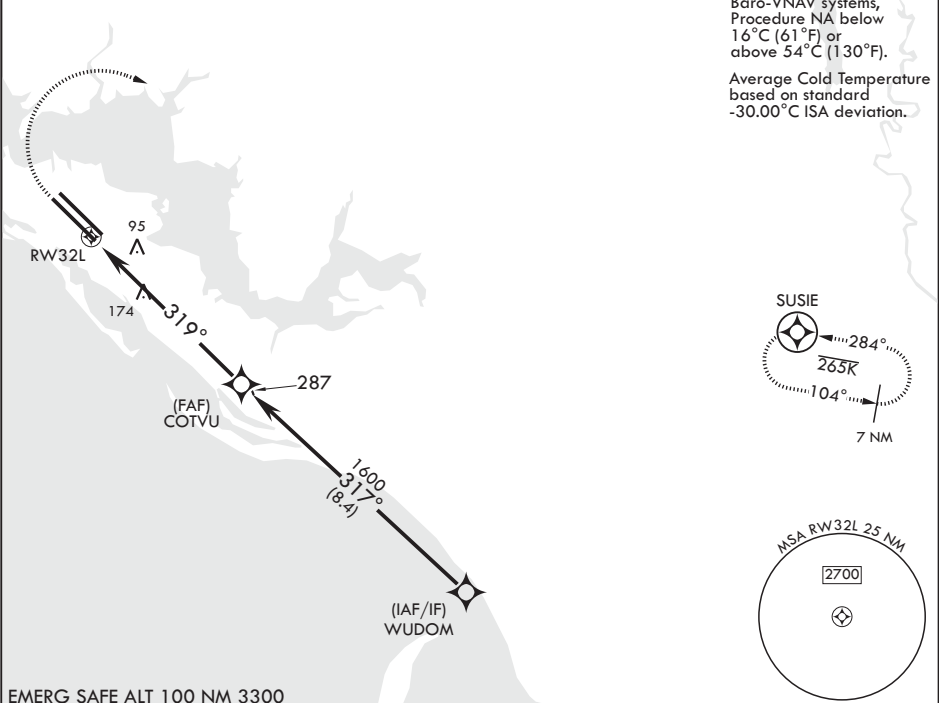
	MISSED APPROACH: Climb to 600 then climbing right turn to 3000 direct SUSIE and hold.
--	--

ATIS★ 254.4	APP CON/DEP CON 119.775 317.45 BLW 5000' 124.15 338.35 ABV 5000'	TOWER★ 133.95 263.15	GND CON 121.9 259.3	CLNC DEL 118.05 348.7	ASR/PAR
----------------	--	-------------------------	------------------------	--------------------------	---------

RNP APCH

112

For uncompensated  
Baro-VNAV systems,  
Procedure NA below  
16°C (61°F) or  
above 54°C (130°F).  
  
Average Cold Temperature  
based on standard  
-30.00°C ISA deviation.



EMERG SAFE ALT 100 NM 3300

			VGSI and RNAV glidepath not coincident (VGSI angle 2.50/TCH 40).	WUDOM	ELEV 17	TDZE 17
						Rwy 32L ldg 9135'
*LNAV only						
CATEGORY						
LPV DA						
LNAV/VNAV DA						
LNAV MDA						
CIRCLING						
PANAMA CITY, FLORIDA						
30°04'N - 85°34'W						
TYNDALL AFB (KPAM)						
RNP (GPS) RWY 32L						

PANAMA CITY, FLORIDA

30°04'N - 85°34'W

TYNDALL AFB (KPAM)

Amdt 2 08OCT20

RNAV (GPS) RWY 32L

SE-3, 31 DEC 2020 to 28 JAN 2021

SE-3, 31 DEC 2020 to 28 JAN 2021