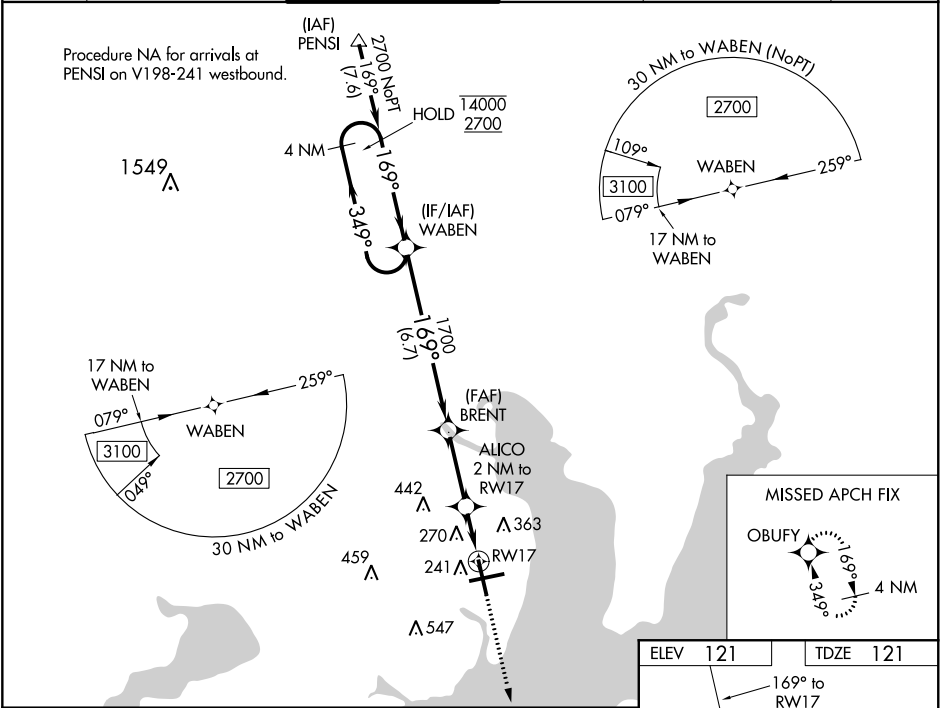


WAAS CH <b>97319</b> <b>W17A</b>	APP CRS <b>169°</b>	Rwy Idg TDZE Apt Elev	<b>7004</b> <b>121</b> <b>121</b>
--	------------------------	-----------------------------	---

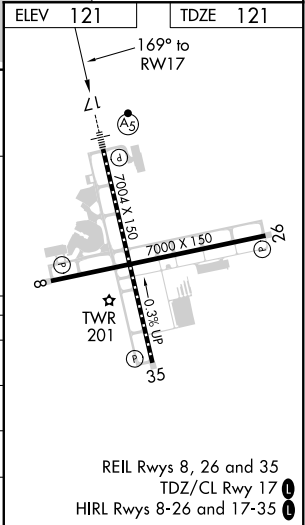
RNAV (GPS) RWY 17  
PENSACOLA INTL (PNS)

RNP APCH.	MALSR 	MISSED APPROACH: Climb to 2000 direct OBUFY and hold.
▼ For uncompensated Baro-VNAV systems, LNAV/VNAV NA below 1°C or above 54°C. CAUTION: Intensive VFR student training in vicinity of airport.		

ATIS <b>121.25</b>	PENSACOLA APP CON <b>119.0 269.375</b>	PENSACOLA TOWER ★ <b>119.9 (CTAF) 0 257.8</b>	GND CON <b>121.9 348.6</b>	CLNC DEL <b>123.725 256.875</b>	UNICOM <b>122.95</b>
-----------------------	---	--	-------------------------------	------------------------------------	-------------------------



4 NM Holding Pattern		WABEN		BRENT		ALICO 2 NM to RW17		2000 OBUFY	
14000 2700		←349° 169°→		1700		*800		*LNAV only.	
GP 3.00° TCH 48		6.7 NM		2.8 NM		0.9 NM		1.1 NM	
CATEGORY	A	B	C	D					
LPV DA	321/18		200 (200-½)						
LNAV/VNAV DA	542/40		421 (500-¾)						
LNAV MDA	520/24	399 (400-½)		520/35	399 (400-¾)				
CIRCLING	580-1 459 (500-1)	680-1 559 (600-1)	680-1½ 559 (600-1½)	680-2 559 (600-2)					



SE-3, 31 DEC 2020 to 28 JAN 2021

SE-3, 31 DEC 2020 to 28 JAN 2021