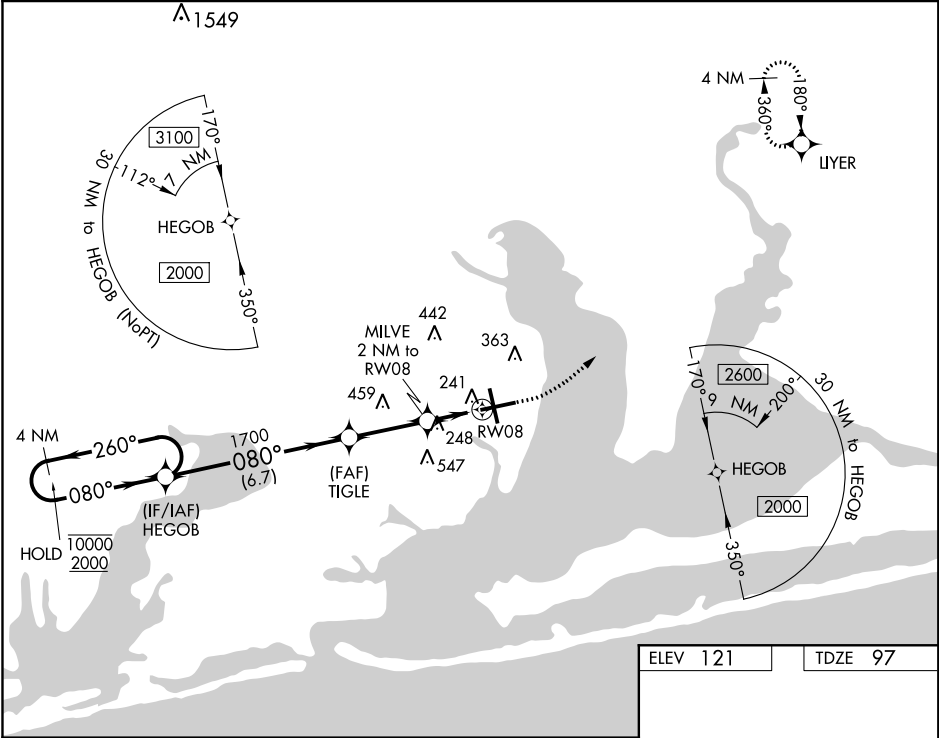


WAAS CH 86219 W08A	APP CRS 080°	Rwy Idg TDZE 97 Apt Elev 121
--	------------------------	--

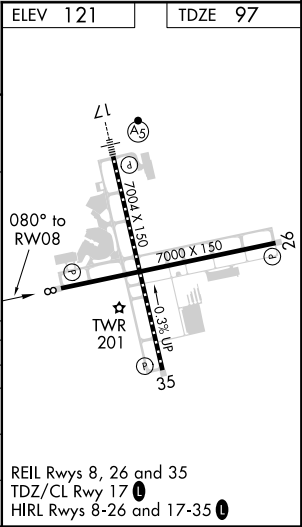
RNAV (GPS) RWY 8
PENSACOLA INTL (PNS)

RNP APCH. ▼ Rwy 8 helicopter visibility reduction below ¾ SM NA. For uncompensated Baro-VNAV systems, LNAV/VNAV NA below 1°C or above 54°C. CAUTION: Intensive VFR student training in vicinity of airport.	MISSED APPROACH: Climb to 600 then climbing left turn to 2200 direct LIYER and hold.
---	--

ATIS 121.25	PENSACOLA APP CON 119.0 269.375	PENSACOLA TOWER ★ 119.9 (CTAF) 0 257.8	GND CON 121.9 348.6	CLNC DEL 123.725 256.875	UNICOM 122.95
-----------------------	---	--	-------------------------------	------------------------------------	-------------------------



4 NM Holding Pattern		HEGOB		600		2200		LIYER	
10000 ← 260°				TIGLE				*LNAV only.	
2000 → 080°				1700					
GP 3.00°				MILVE					
TCH 55				2 NM to RW08					
				*1.3 NM to RW08					
				RW08					
		6.7 NM		2.9 NM		0.7 NM		1.3 NM	
CATEGORY	A	B	C	D					
LPV DA	347-1		250 (300-1)						
LNAV/VNAV DA	402-1		305 (300-1)						
LNAV MDA	560-1 463 (500-1)		560-1 3/8 463 (500-1 3/8)						
CIRCLING	580-1 459 (500-1)	680-1 559 (600-1)	680-1 1/2 559 (600-1 1/2)	680-2 559 (600-2)					



SE-3, 31 DEC 2020 to 28 JAN 2021

SE-3, 31 DEC 2020 to 28 JAN 2021