

APP CRS  
**185°**

Rwy Idg  
**5234**

TDZE  
**62**

Apt Elev  
**62**

**RNAV (RNP) RWY 19**  
SEBRING RGNL (SEF)

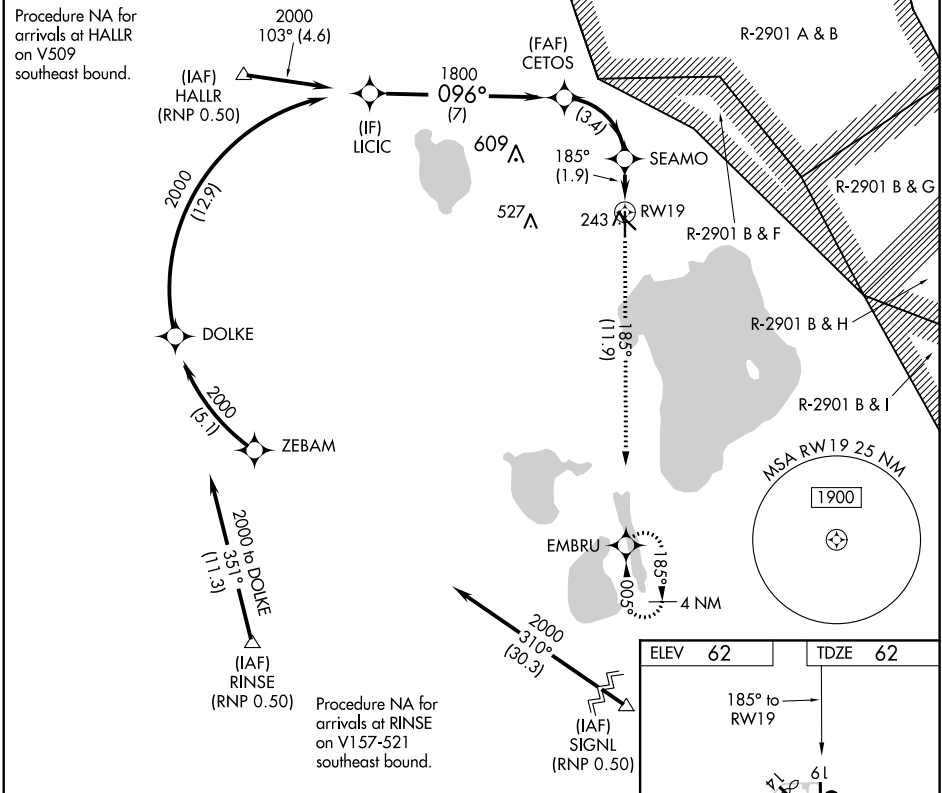
▼

▲ NA

For uncompensated Baro-VNAV systems, procedure NA below -15°C (5°F) or above 54°C (130°F). GPS and RF required. Night landing: Rwy 14, 32 NA.

MISSED APPROACH: Climb to 2000 on track 185° to EMBRU and hold.

AWOS-3 <b>119.475</b>	MIAMI CENTER <b>134.55 257.7</b>	UNICOM <b>122.7 (CTAF) 0</b>
--------------------------	-------------------------------------	---------------------------------



LICIC

2000

GP 3.00°  
TCH 55

CETOS

1800

SEAMO

718

EMB RU

2000

tr 185°

096°

1800

185°

7 NM

3.4 NM

1.9 NM

CATEGORY	A	B	C	D
RNP 0.30 DA	440-1¼ 378 (400-1¼)			

**AUTHORIZATION REQUIRED**

MIRL Rwy 1-19 0  
REIL Rwys 1 and 19 0