


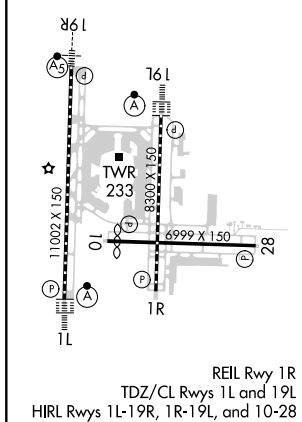
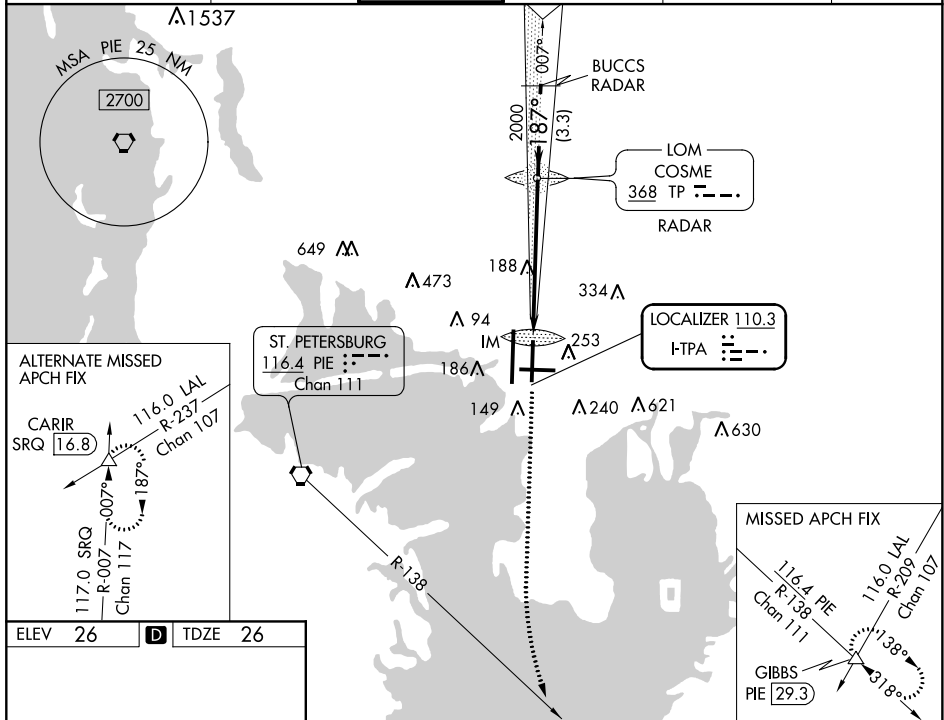
20366

LOC I-TPA <u>110.3</u>	APP CRS 187°	Rwy Idg 8300 TDZE 26 Apt Elev 26
----------------------------------	------------------------	---

ILS RWY 19L (SA CAT I)
TAMPA INTL (TPA)

<p>V A</p> <p>Simultaneous approach authorized. RADAR required. Requires specific OPSPEC, MSPEC, or LOA approval and use of HUD to DH.</p>	<p>ALSF-2</p> 	<p>MISSED APPROACH: Climb to 600 then climbing left turn to 2800 on heading 160° and on PIE VORTAC R-138 to GIBBS INT/PIE 29.3 DME and hold.</p>
--	---	--

ARR	D-ATIS	DEP	TAMPA APP CON	TAMPA TOWER	GND CON	CLNC DEL	CPDLC
126.45		128.475	118.5 307.175	119.5 269.4	121.7 269.4	133.6	



600 ↑	2800 hdg 160°	PIE R-138	GIBBS △	VGSI and ILS glidepath not coincident (VGSI Angle 3.00°/TCH 61).
CATEGORY S-ILS 19L	A	B	C	D
	RA 150/14 150 DA 176			

SA CATEGORY I ILS- SPECIAL AIRCREW
& AIRCRAFT CERTIFICATION REQUIRED

TAMPA INTL (TPA)
ILS RWY 19L (SA CAT I)

SE-3, 31 DEC 2020 to 28 JAN 2021