

LOC I-TPA 110.3	APP CRS 187°	Rwy Idg 8300 TDZE 26 Apt Elev 26
---------------------------	------------------------	---

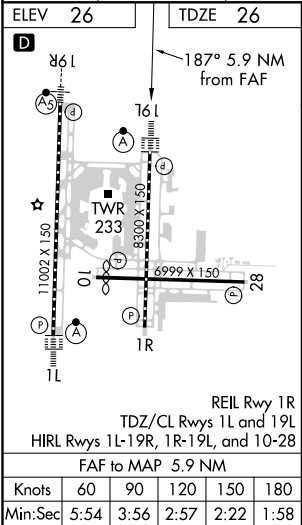
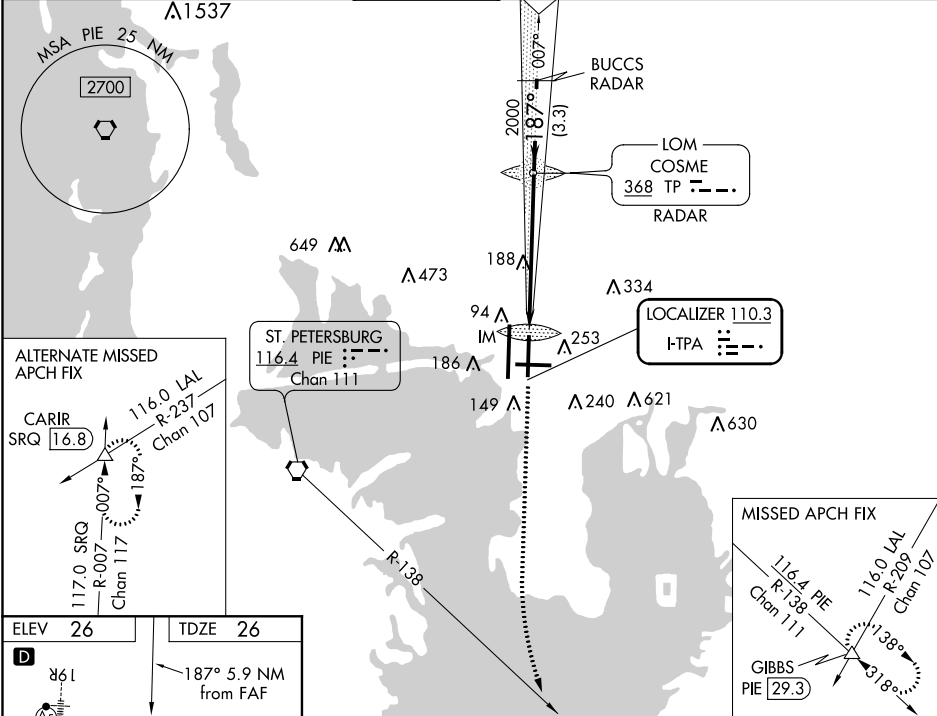
ILS or LOC RWY 19L
TAMPA INTL (TPA)

Simultaneous approach authorized. RADAR required.
For inop ALS, increase S-ILS 19L Cat E visibility to RVR 4000 and S-LOC 19L Cat E visibility to RVR 6000.

ALSIF-2

MISSED APPROACH: Climb to 600 then climbing left turn to 2800 on heading 160° and on PIE VORTAC R-138 to GIBBS INT/PIE 29.3 DME and hold.

ARR 126.45	D-ATIS 128.475	DEP 128.475	TAMPA APP CON 118.5 307.175	TAMPA TOWER 119.5 269.4	GND CON 121.7 269.4	CLNC DEL 133.6	CPDLC
----------------------	--------------------------	-----------------------	---------------------------------------	-----------------------------------	-------------------------------	--------------------------	-------



ELEV 26	TDZE 26	187° 5.9 NM from FAF			
		PIE R-138	GIBBS	VGSI and ILS glidepath not coincident (VGSI Angle 3.00/TCH 61).	
				GS 3.00° TCH 51	
CATEGORY	A	B	C	D	E
S-ILS 19L	226/18 200 (200-½)				
S-LOC 19L	440/24 414 (500-½)		440/40 414 (500-¾)		
CIRCLING	560-1 534 (600-1)		680-1¾ 954 (700-1¾)		980-3 954 (1000-3)
				NA	

SE-3, 31 DEC 2020 to 28 JAN 2021

SE-3, 31 DEC 2020 to 28 JAN 2021