

WAAS CH 50406 W01A	APP CRS 007°	Rwy Idg 10800 TDZE 11 Apt Elev 26
--	------------------------	--

RNAV (GPS) RWY 1L
TAMPA INTL (TPA)

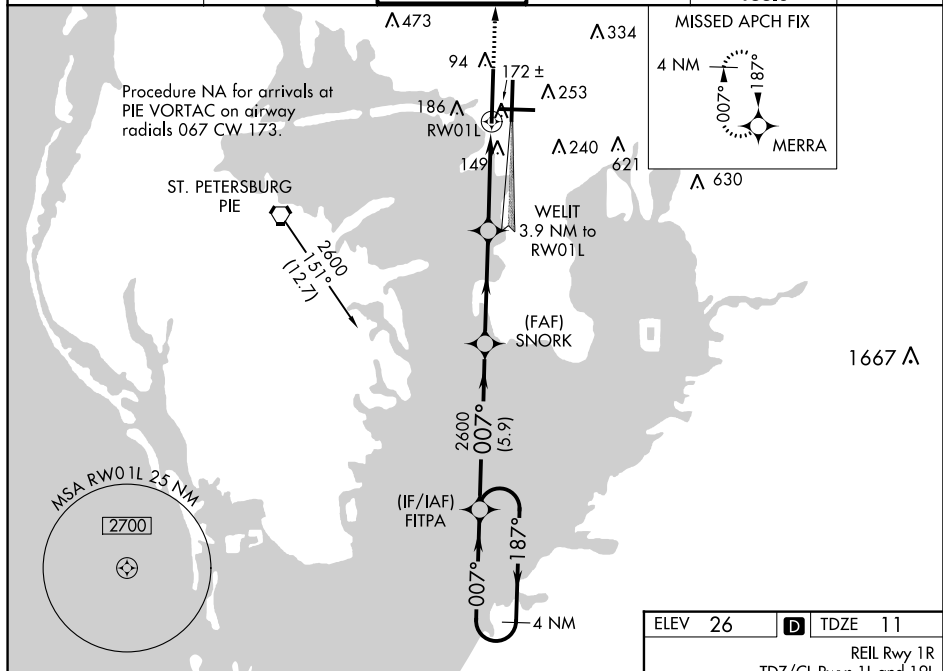
T For uncompensated Baro-VNAV systems, LNAV/VNAV NA below -15°C (5°F) or above 43°C (109°F). DME/DME RNP-0.3 NA. For inop ALSF, increase LPV Cat E visibility to RVR 4000, LNAV/VNAV Cat E visibility to 1½ mile, and LNAV Cat E visibility to RVR 6000. Simultaneous approach authorized with Rwy 1R. LNAV procedure NA during simultaneous operations. Use of FD or AP providing RNAV track guidance required during simultaneous operations.

ALSF-2

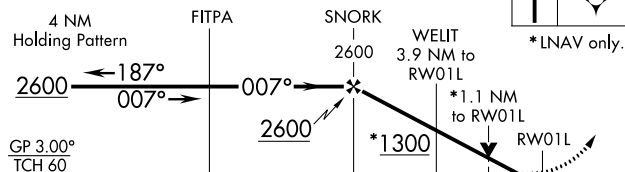


MISSED APPROACH:
Climb to 3000 direct
MERRA and hold.

ARR	D-ATIS	DEP	TAMPA APP CON	TAMPA TOWER	GND CON	CLNC DEL	CPDLC
126.45	128.475	118.5	307.175	119.5 269.4	121.7 269.4	133.6	



VGSI and RNAV glidepath not coincident (VGSI Angle 3.00/TCH 71).



CATEGORY	A	B	C	D	E
LPV DA	211/18 200 (200-½)				
LNAV/VNAV DA	431/45 420 (500-¾)				
LNAV MDA	440/24 429 (500-½)	440/40 429 (500-¾)			
C CIRCLING	560-1 534 (600-1)	680-1 ³ / ₄ 654 (700-1 ³ / ₄)		980-3	954 (1000-3)

