

TAMPA, FLORIDA

RNAV (GPS) RWY 5

APCH CRS 044°	Rwy ldg	11,421
	TDZE	10
	Arpt Elev	14

AL-418 (USAF)

MACDILL AFB (KMCF)

ALSF-1

MISSED APPROACH: Climb to 1700 then climbing right turn to 2700 direct AGUSE and hold.

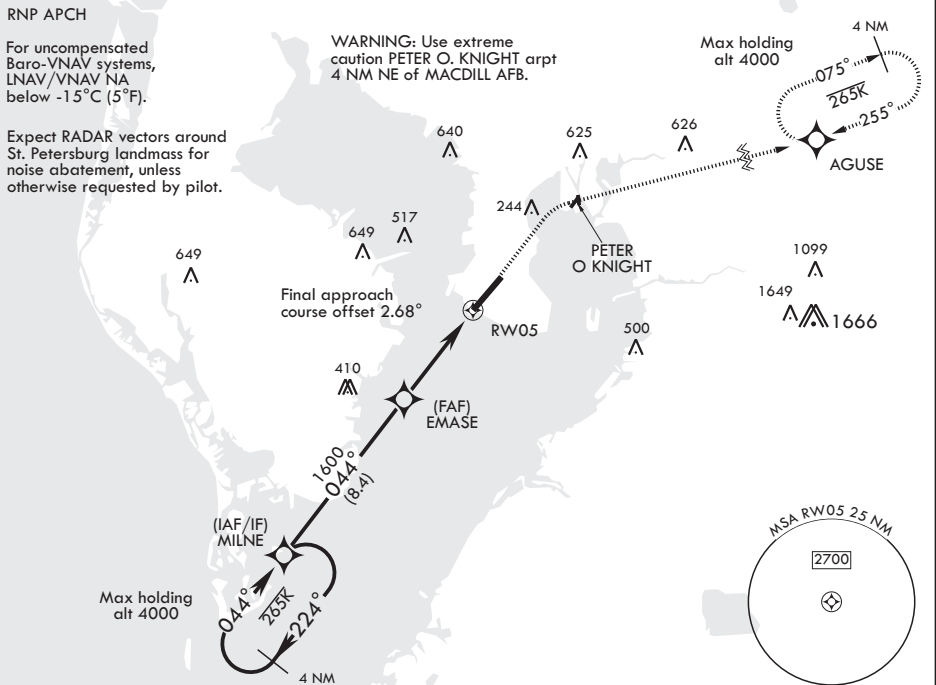
ATIS 133.825 270.1	TAMPA APP CON 124.95 354.0	TOWER 120.175 294.7	GND CON 118.575 275.8
-----------------------	-------------------------------	------------------------	--------------------------

RNP APCH

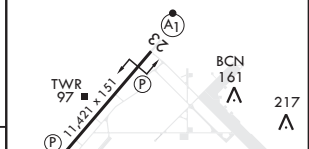
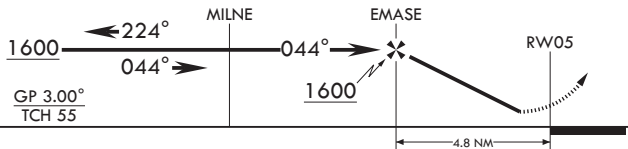
For uncompensated Baro-VNAV systems, LNAV/VNAV NA below -15°C (5°F).

WARNING: Use extreme caution PETER O. KNIGHT arpt 4 NM NE of MACDILL AFB.

Expect RADAR vectors around St. Petersburg landmass for noise abatement, unless otherwise requested by pilot.



EMERG SAFE ALT 100 NM 3000



CATEGORY	A	B	C	D	E
LNAV/VNAV DA*	260/24 250 (300-1/2)	264/24 254 (300-1/2)	272/24 262 (300-1/2)	283/24 273 (300-1/2)	304/24 294 (300-1/2)
LNAV MDA**	420/24 410	(500-1/2)	420/40	410	(500-3/4)
CIRCLING***	500-1 486 (500-1)	540-1 526 (600-1)	540-1 1/2 526 (600-1 1/2)	580-2 566 (600-2)	1020-3 1006 (1100-3)

HIRL all Rwys

TAMPA, FLORIDA

27°51'N - 82°31'W

MACDILL AFB (KMCF)

RNAV (GPS) RWY 5

Orig 31DEC20

SE-3, 31 DEC 2020 to 28 JAN 2021