

TAMPA, FLORIDA

TACAN RWY 23

TACAN MCF Chan 47	APCH CRS 240°	Rwy ldg TDZE Arpt Elev	11,421 14 14
----------------------	------------------	------------------------------	--------------------

AL-418 (USAF)

MACDILL AFB (KMCF)

* When ALS inop, increase CAT AB RVR to 55, vis to 1 mile;
CAT CDE vis to 1 1/4 miles.
** Circling not authorized NW of Rwy 5-23.



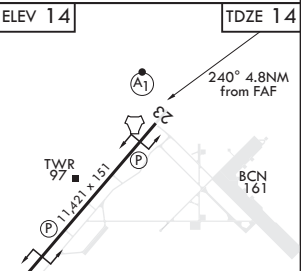
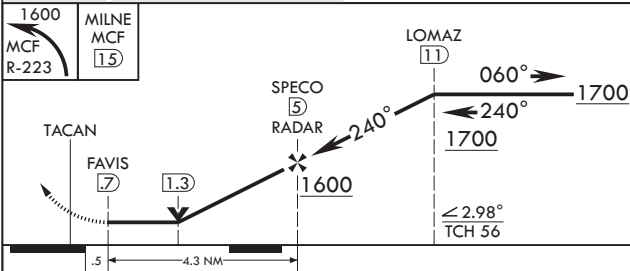
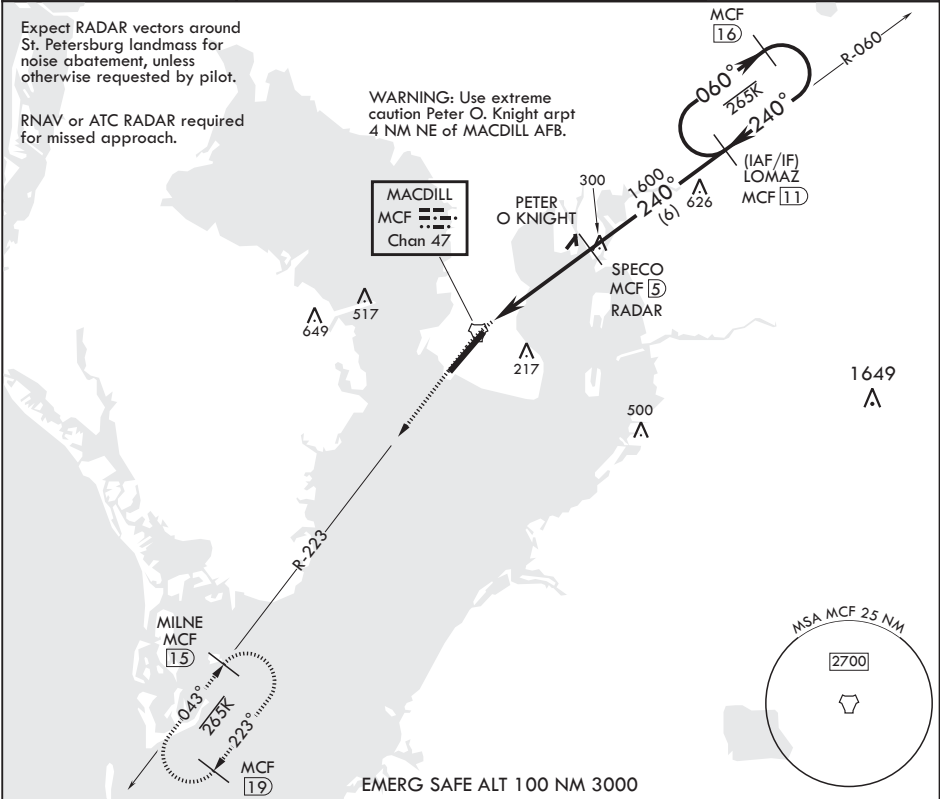
MISSED APPROACH: Climb to 1600 via MCF TACAN R-223 to MILNE and hold.

ATIS 133.825 270.1	TAMPA APP CON 124.95 354.0	TOWER 120.175 294.7	GND CON 118.575 275.8
-----------------------	-------------------------------	------------------------	--------------------------

Expect RADAR vectors around St. Petersburg landmass for noise abatement, unless otherwise requested by pilot.

RNAV or ATC RADAR required for missed approach.

WARNING: Use extreme caution Peter O. Knight arpt 4 NM NE of MACDILL AFB.



CATEGORY	A	B	C	D	E
S-23*	440/24 426 (500-1/2)		440/40 426		(500-3/4)
CIRCLING**	520-1 486 (600-1)	540-1 526 (600-1)	540-1 1/2 526 (600-1 1/2)	580-2 566 (600-2)	1020-3 1006 (1100-3)

HIRL all Rwys

TAMPA, FLORIDA

27°51'N - 82°31'W

MACDILL AFB (KMCF)

Orig 31DEC20

TACAN RWY 23

SE-3, 31 DEC 2020 to 28 JAN 2021

SE-3, 31 DEC 2020 to 28 JAN 2021