

TACAN DWG  
Chan **2**

APCH CRS  
360°

Rwy Idg	10,001
THRE	48
Arpt Elev	84

JAL-436 [USAF]

EGLIN AFB/DESTIN-FT WALTON BEACH(KVPS)

\* When ALS inop, increase CAT CDE vis to 1 $\frac{3}{8}$  miles.



† MISSED APPROACH: Climb to 800 then climbing left turn to 2200 direct TUFER DWG R-180/12 DME and hold.

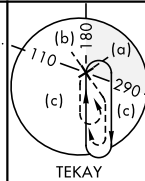
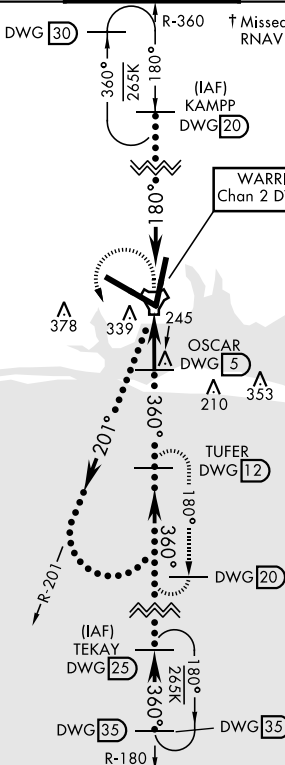
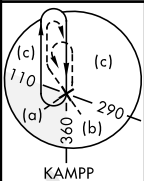
ATIS ★  
134.625 273.5

EGLIN APP CON		
125.1	281.45	271°- 089°
132.1	360.6	090°- 270°

EGLIN TOWER  
**118.2 353.65**

GND CON  
**121.8 335.8**

CLNC DEL  
**127.7 377.2**



Procedure not usable at times  
due to restricted area activity.


† Missed approach requires use of RNAV or ATC RADAR monitoring.

749  
A308  
A379  
A

SE-3, 31 DEC 2020 to 28 JAN 2021

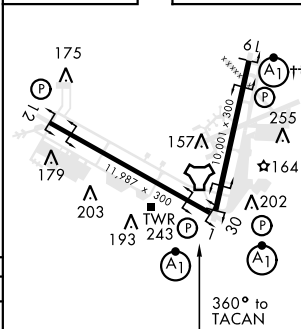
SE-3, 31 DEC 2020 to 28 JAN 2021

EMERG SAFE ALT 100 NM 3600

800	2200
↑	 DWG R-180

CATEGORY	C	D	E
S-1*	540/50      492      (500-1)		
CIRCLING	760-2 676 (700-2)	760-2¼ 676 (700-2¼)	760-2½ 676 (700-2½)

ELEV	84	THRE	48
------	----	------	----



HIRL all Rwy	
††Rwy 19 apch lgt 1500' nonstandard.	

VALPARAISO, FLORIDA  
Amdt 1 26MAY16

30°29'N-86°32'W

EGLIN AFB/DESTIN-FT WALTON BEACH (KVPS)

HI-TACAN RWY 1