
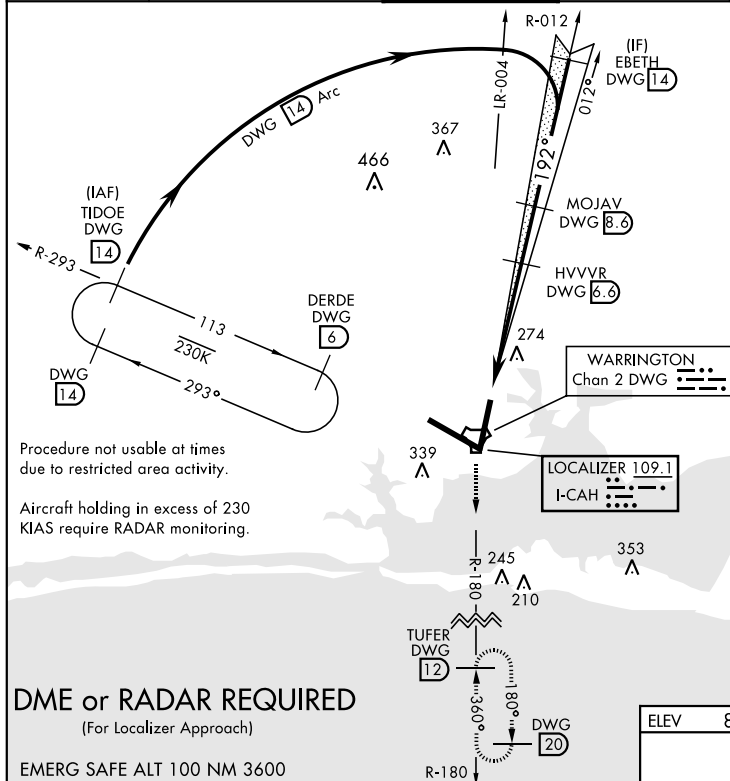


ILS X or LOC X RWY 19

LOC I-CAH <u>109.1</u>	APCH CRS 192°	Rwy Idg 10,001 THRE 60 Arpt Elev 84
----------------------------------	-------------------------	--

AL-436 [USAF] EGLIN AFB/DESTIN-FT WALTON BEACH (KVPS)

* When ALS inop, increase CAT ABCDE RVR to 40 and vis to 3/4 mile ** When ALS inop, increase CAT AB RVR to 55 and vis 1 mile, CAT CDE RVR to 60 and vis to 1 1/2 miles.		ALSF-1 	MISSED APPROACH: Climb to 2200 on DWG R-180 to 12 DME/TUFER and hold.		
ATIS ★ 134.625 273.5		EGLIN APP CON 125.1 281.45 271°- 089° 132.1 360.6 090°- 270°	EGLIN TOWER 118.2 353.65	GND CON 121.8 335.8	CLNC DEL 127.7 377.2

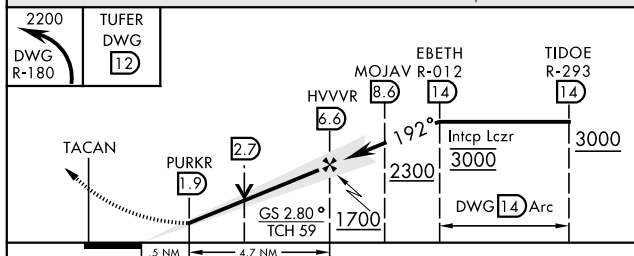


Procedure not usable at times
due to restricted area activity.

Aircraft holding in excess of 230 KIAS require RADAR monitoring.

DME or RADAR REQUIRED

EMERG SAFE ALT 100 NM 3600



CATEGORY	A	B	C	D	E
S-ILS 19 *	260/24		200	(200-½)	
S-LOC 19 **	480/24	420 (400-½)	480/40		420 (400-¾)
CIRCLING	660-1	576 (600-1)	760-2 676 (700-2)	760-2¼ 676 (700-2¼)	760-2½ 676 (700-2½)

HIRL all Rwy
† Rwy 19 apch lgt 1500' nonstandard.

LOC FAF to MAP 4.7 NM					
Knots	60	90	120	150	180
Min:Sec	4:42	3:08	2:21	1:53	1:34

VALPARAISO, FLORIDA

30°29'N-86°32'W

EGLIN AFB/DESTIN-FT WALTON BEACH (KVPS)

ILS X or LOC X RWY 19

SE-3, 31 DEC 2020 to 28 JAN 2021

SE-3, 31 DEC 2020 to 28 JAN 2021