

VALPARAISO, FLORIDA

# ILS Y or LOC Y RWY 30

LOC I-VPS <b>109.1</b> Chan <b>28</b>	APCH CRS <b>300°</b>	Rwy ldg <b>11,987</b> THRE <b>49</b> Arpt Elev <b>84</b>
---	-------------------------	--

AL-436 [USAF]

EGLIN AFB/DESTIN-FT WALTON BEACH(KVPS)

\* When ALS inop, increase RVR to 40, vis to ¾ mile.  
\*\* When ALS inop, increase RVR to 55, vis to 1 mile.



† MISSED APPROACH: Climb straight ahead to 600, then climbing right turn to 3000, intercept CEW VORTAC R-170 to CEW and hold.

ATIS ★ <b>134.625 273.5</b>	EGLIN APP CON <b>125.1 281.45</b> 271°-089° <b>132.1 360.6</b> 090°-270°	EGLIN TOWER <b>118.2 353.65</b>	GND CON <b>121.8 335.8</b>	CLNC DEL <b>127.7 377.2</b>
--------------------------------	--	------------------------------------	-------------------------------	--------------------------------

CRESTVIEW  
115.9 CEW  
Chan 106

† Missed approach requires use of RNAV or ATC RADAR monitoring.

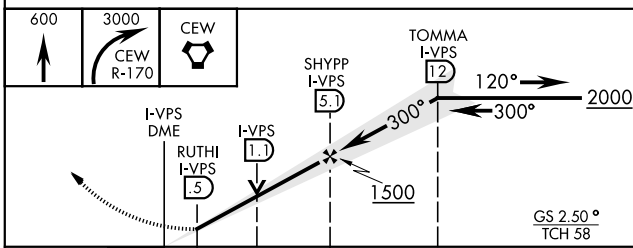
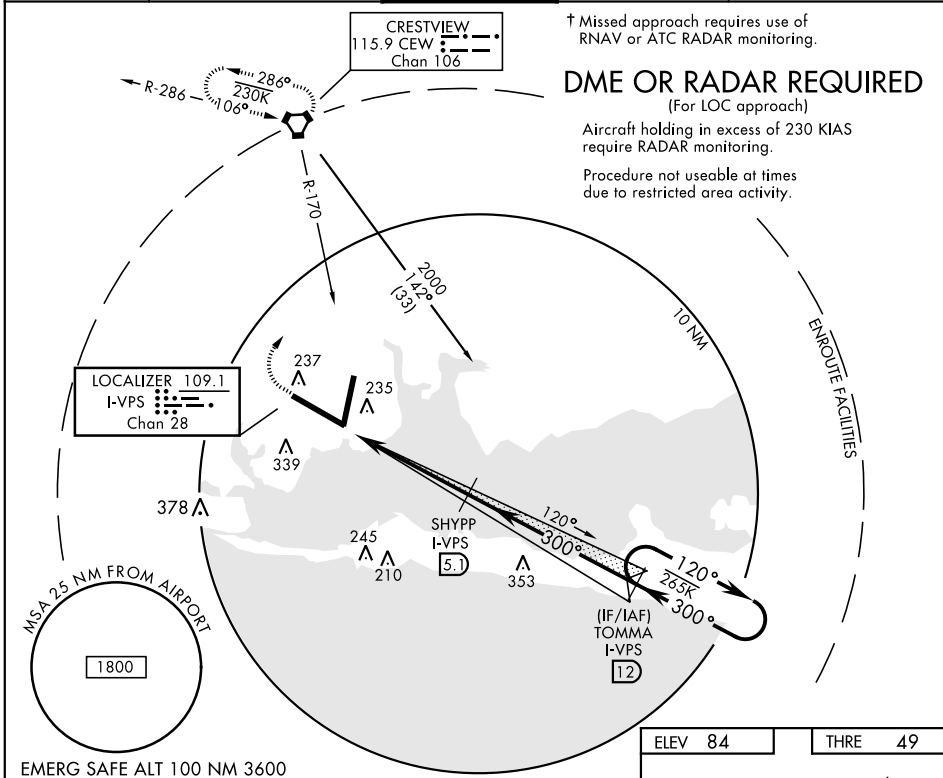
## DME OR RADAR REQUIRED

(For LOC approach)

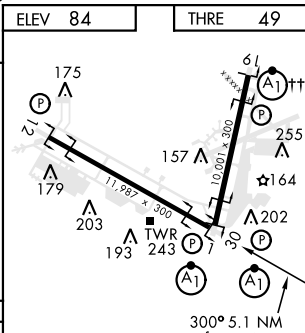
Aircraft holding in excess of 230 KIAS require RADAR monitoring.

Procedure not useable at times due to restricted area activity.

SE-3, 31 DEC 2020 to 28 JAN 2021



CATEGORY	A	B	C	D	E
S-ILS 30*	249/24		200	(200-½)	
S-LOC 30**	420/24	371 (400-½)	420/35	371	(400-¾)
CIRCLING	660-1	576 (600-1)	760-2 676 (700-2)	760-2¼ 676 (700-2¼)	760-2½ 676 (700-2½)



HIRL all Rwy						from FAF
†† Rwy 19 apch lgt 1500' nonstandard.						
FAF to MAP 4.6 NM						
Knots	60	90	120	150	180	
Min:Sec	4:36	3:04	2:18	1:50	1:32	

VALPARAISO, FLORIDA

Orig 26MAY16

30°29'N-86°32'W

EGLIN AFB/DESTIN-FT WALTON BEACH(KVPS)

# ILS Y or LOC Y RWY 30

SE-3, 31 DEC 2020 to 28 JAN 2021