

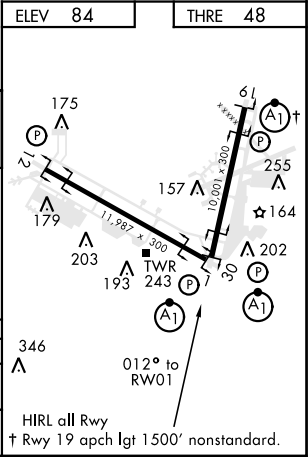
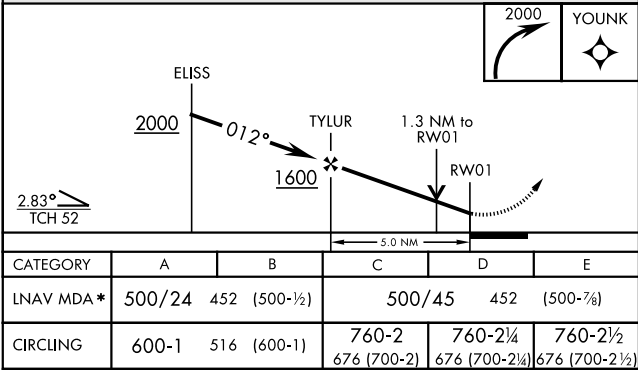
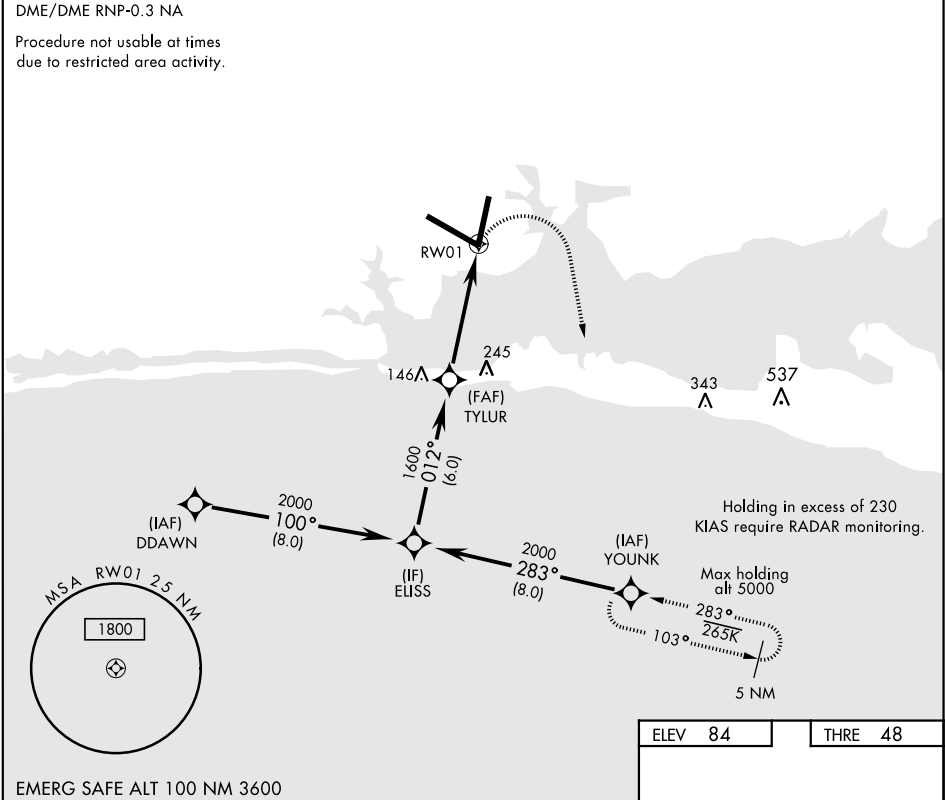
VALPARAISO, FLORIDA

RNAV (GPS) RWY 1

APCH CRS	Rwy ldg	10,001
012°	THRE	48
	Arpt Elev	84

AL-436 [USAF] EGLIN AFB/DESTIN-FT WALTON BEACH (KVPS)

* When ALS inop, increase CAT AB RVR to 55 and vis to 1 mile, CAT CDE vis to 1½ miles.			ALSF-1 	MISSED APPROACH: Climbing right turn to 2000 to YOUNK and hold.	
ATIS ★	EGLIN APP CON	EGLIN TOWER	GND CON	CLNC DEL	
134.625 273.5	125.1 281.45 271°- 089° 132.1 360.6 090°- 270°	118.2 353.65	121.8 335.8	127.7 377.2	



VALPARAISO, FLORIDA

Amdt 1 30MAY13

30°29'N-86°32'W

EGLIN AFB/DESTIN-FT WALTON BEACH (KVPS)

RNAV (GPS) RWY 1

SE-3, 31 DEC 2020 to 28 JAN 2021

SE-3, 31 DEC 2020 to 28 JAN 2021