

VALPARAISO, FLORIDA

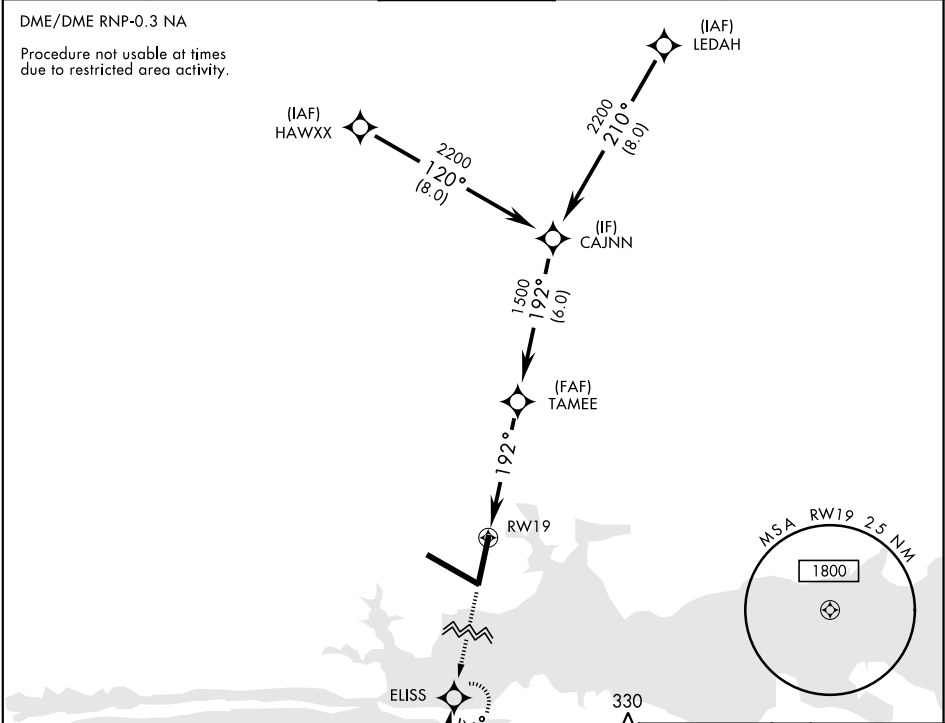
RNAV (GPS) RWY 19

APCH CRS	Rwy ldg	10,001
192°	THRE	60
	Arpt Elev	84

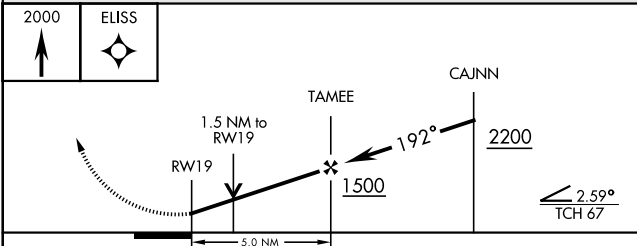
AL-436 [USAF] EGLIN AFB/DESTIN-FT WALTON BEACH (KVPS)

* When ALS inop, increase CAT AB RVR to 55 and vis to 1 mile, CAT CDE vis to 1½ miles.	ALSF-1 	MISSED APPROACH: Climb straight ahead to 2000 to ELISS and hold.
--	------------	--

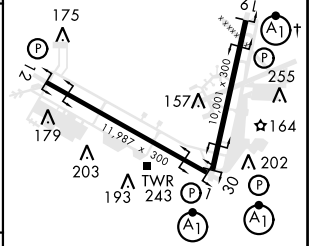
ATIS ★ 134.625 273.5	EGLIN APP CON 125.1 281.45 271°-089° 132.1 360.6 090°-270°	EGLIN TOWER 118.2 353.65	GND CON 121.8 335.8	CLNC DEL 127.7 377.2
-------------------------	--	-----------------------------	------------------------	-------------------------



EMERG SAFE ALT 100 NM 3600	ELEV 84	THRE 60
----------------------------	---------	---------



CATEGORY	A	B	C	D	E
LNAV MDA ★	540/24	480 (500-½)	540/50	480	(500-1)
CIRCLING	600-1	516 (600-1)	760-2 676 (700-2)	760-2¼ 676 (700-2¼)	760-2½ 676 (700-2½)



VALPARAISO, FLORIDA

30°29'N-86°32'W

EGLIN AFB/DESTIN-FT WALTON BEACH (KVPS)

Amtd 1 30MAY13

RNAV (GPS) RWY 19

SE-3, 31 DEC 2020 to 28 JAN 2021

SE-3, 31 DEC 2020 to 28 JAN 2021