

## RNAV (GPS) RWY 30

APCH CRS 300°	Rwy Ldg 11,987 THRE 49 Arpt Elev 84
------------------	---

AL-436 [USAF]

EGLIN AFB/DESTIN-FT WALTON BEACH (KVPS)

\* When ALS inop, increase CAT AB RVR to 55 and vis to 1 mile, CAT CDE vis to 1 $\frac{3}{8}$  miles.

ALSF-1



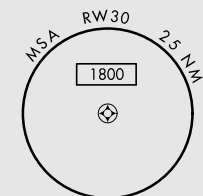
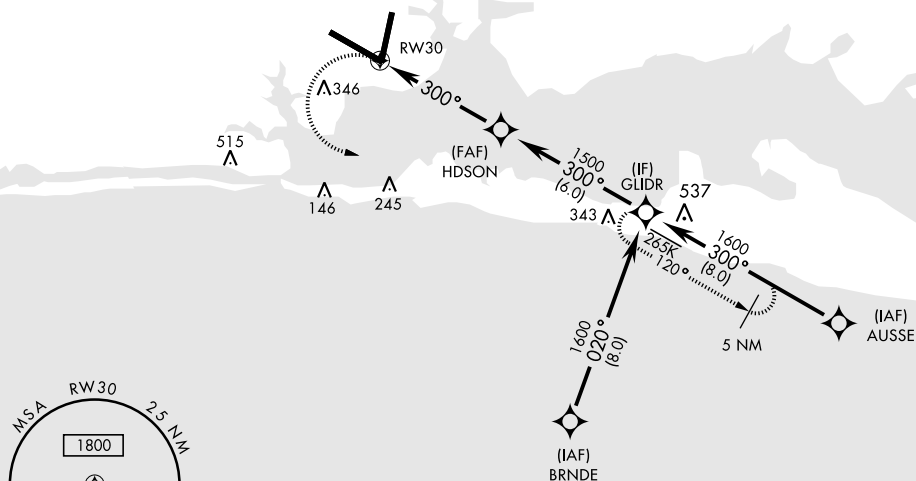
**MISSED APPROACH:** Climbing left turn to 2000 to GLDR and hold.

ATIS ★	EGLN APP CON	EGLN TOWER	GND CON	CLNC DEL
134.625 273.5	125.1 281.45 271° - 089° 132.1 360.6 090° - 270°	118.2 353.65	121.8 335.8	127.7 377.2

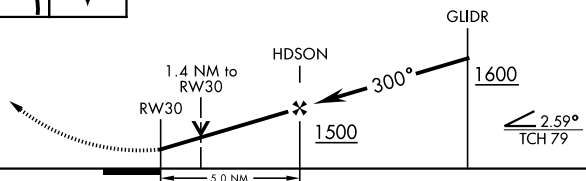
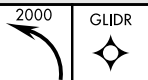
DME/DME RNP-0.3 NA

Procedure not usable at times due to restricted area activity.

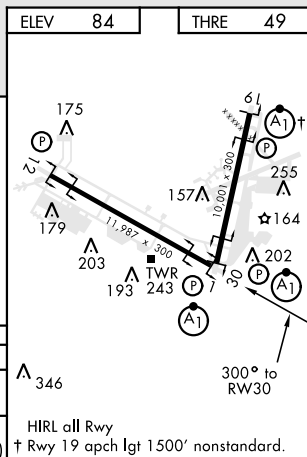
Aircraft holding in excess of 230 KIAS require RADAR monitoring.



EMERG SAFE ALT 100 NM 3600



CATEGORY	A	B	C	D	E
LNAV MDA *	500/24	451 (500-½)	500/45	451 (500-¾)	
CIRCLING	600-1	516 (600-1)	760-2 676 (700-2)	760-2½ 676 (700-2½)	760-2½ 676 (700-2½)



VALPARAISO, FLORIDA

30°29'N-86°32'W

EGLIN AFB/DESTIN-FT WALTON BEACH (KVPS)

Amdt 1 30MAY13

## RNAV (GPS) RWY 30

SE-3, 31 DEC 2020 to 28 JAN 2021

SE-3, 31 DEC 2020 to 28 JAN 2021