

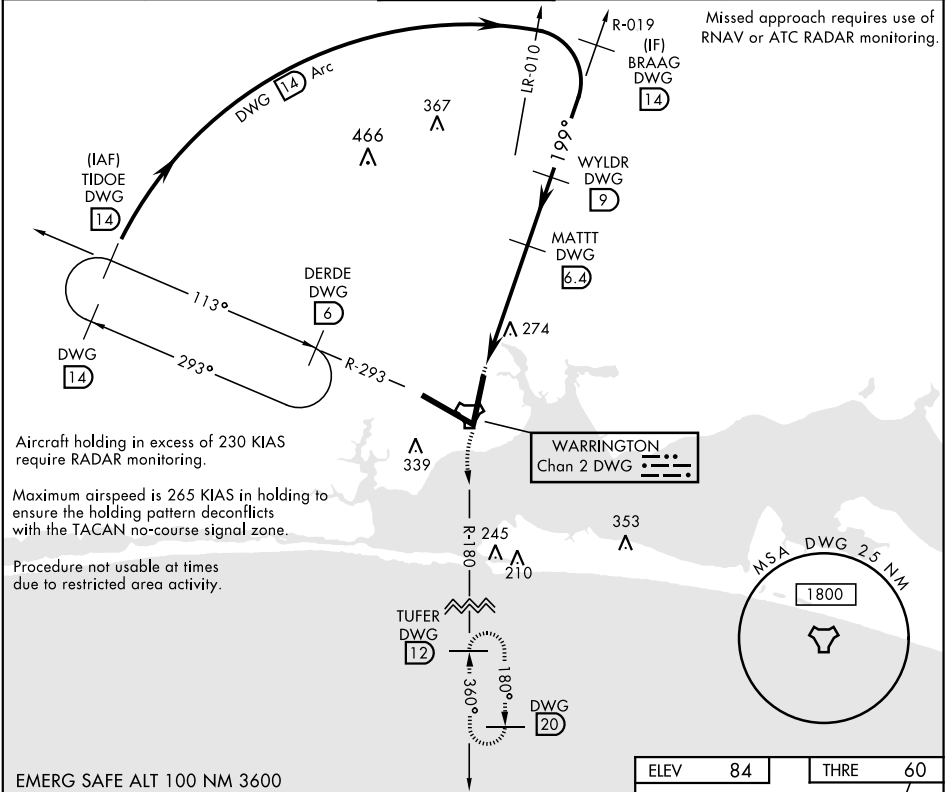
TACAN RWY 19

TACAN	DWG	APCH CRS	Rwy ldg	10,001
Chan	2	199°	THRE	60
			Arpt Elev	84

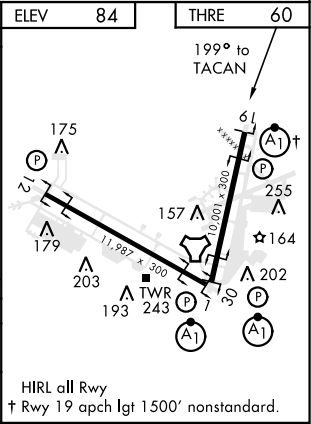
AL-436 [USAF] EGLIN AFB/DESTIN-FT WALTON BEACH (KVPS)

* When ALS inop, increase CAT AB RVR to 55 and vis to 1 mile, CAT CDE vis to 1 3/8 miles.			ALS F-1 A1	MISSED APPROACH: Climbing left turn to 2200 TUFER DWG TACAN R-180/12 DME and hold.
---	--	--	---------------	--

ATIS *	EGLIN APP CON	EGLIN TOWER	GND CON	CLNC DEL
134.625 273.5	125.1 281.45 271°- 089° 132.1 360.6 090°- 270°	118.2 353.65	121.8 335.8	127.7 377.2



--	--	--	--	--	--



TACAN RWY 19

SE-3, 31 DEC 2020 to 28 JAN 2021

SE-3, 31 DEC 2020 to 28 JAN 2021