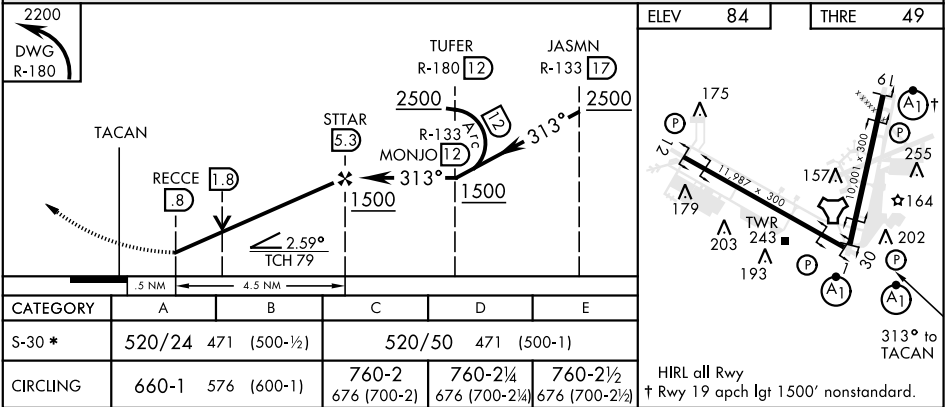
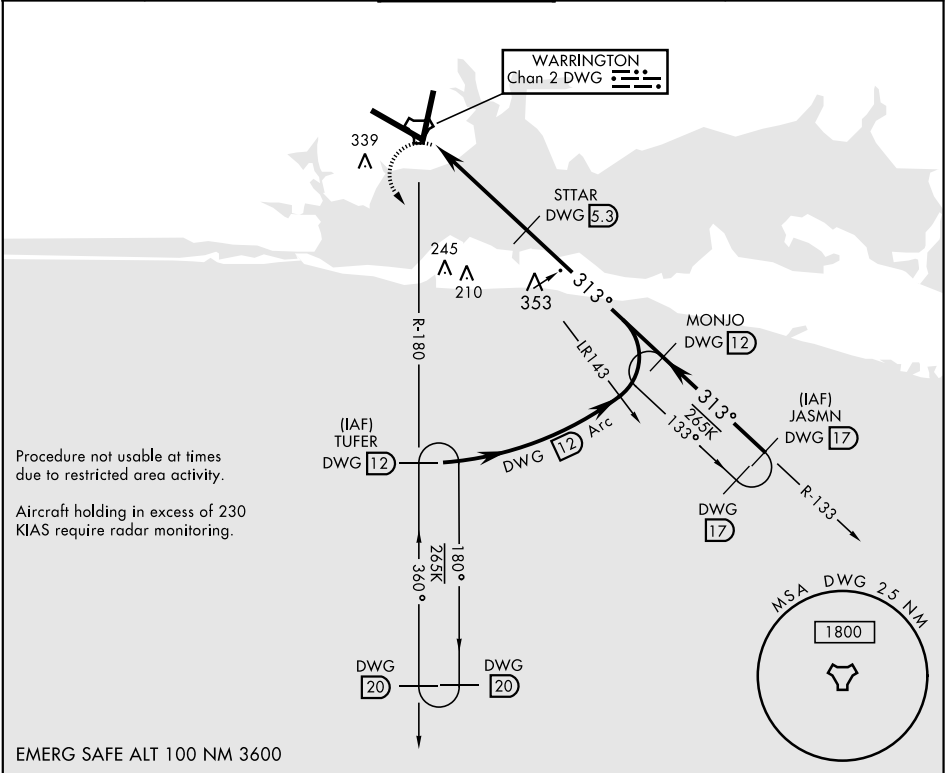


TACAN DWG Chan 2	APCH CRS 313°	Rwy Idg 11,987 THRE 49 Arpt Elev 84	AL-436 [USAF]	EGLIN AFB/DESTIN-FT WALTON BEACH (KVPS)	
* When ALS inop, increase CAT AB RVR to 55 and vis to 1 mile, CAT CDE vis to 1½ miles.			ALS F-1 A1	MISSED APPROACH: Climbing left turn to 2200 direct TUFER DWG R-180/12 DME and hold.	
ATIS★ 134.625 273.5	EGLIN APP CON 125.1 281.45 271°-089° 132.1 360.6 090°-270°		EGLIN TOWER 118.2 353.65	GND CON 121.8 335.8	CLNC DEL 127.7 377.2



SE-3, 31 DEC 2020 to 28 JAN 2021

SE-3, 31 DEC 2020 to 28 JAN 2021