

WAAS CH <b>53611</b> <b>W22A</b>	APP CRS <b>223°</b>	Rwy Idg TDZE <b>23</b> Apt Elev <b>24</b>	<b>4945</b>
----------------------------------------	------------------------	-------------------------------------------------	-------------

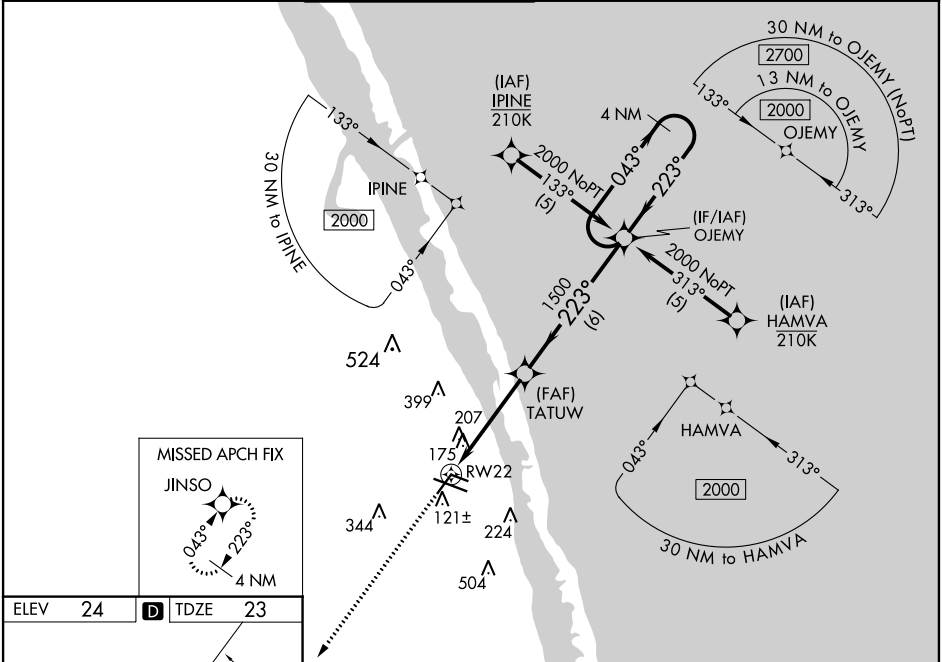
RNAV (GPS) RWY 22

VERO BEACH RGNL (VRB)

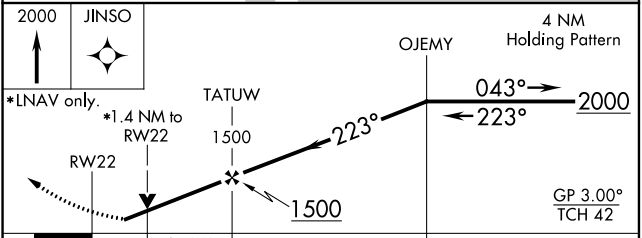
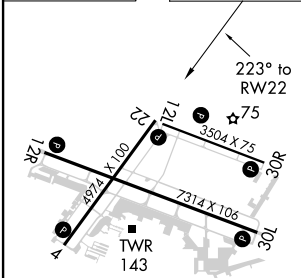
**⚠** Circling to Rwy 30R NA at night. For uncompensated Baro-VNAV systems, LNAV/VNAV NA below 0°C (32°F) or above 43°C (109°F). DME/DME RNP-0.3 NA. When local altimeter setting not received, use Fort Pierce altimeter setting and increase all DA 23 feet and all MDA 40 feet and increase LPV and LNAV/VNAV all Cats visibility ¼ mile and LNAV Cats C/D ½ mile and Circling Cat D visibility ¼ mile. Baro-VNAV and VDP NA when using Fort Pierce altimeter setting. Rwy 22 helicopter visibility reduction below ¾ SM NA.

MISSED APPROACH:  
Climb to 2000 direct  
JINSO and hold.

ATIS <b>120.575</b>	PALM BEACH APP CON <b>123.625 225.4 (N)</b>	VERO BEACH TOWER★ <b>126.3 (CTAF) 0</b>	GND CON <b>127.45</b>	CLNC DEL <b>134.975</b>	UNICOM <b>122.95</b>
------------------------	------------------------------------------------	--------------------------------------------	--------------------------	----------------------------	-------------------------



ELEV 24	<b>D</b>	TDZE 23
---------	----------	---------



CATEGORY	A	B	C	D
LPV DA	340-1 317 (400-1)			
LNAV/VNAV DA	544-1¾ 521 (600-1¾)			
LNAV MDA	520-1	497 (500-1)	520-1¾	497 (500-1¾)
CIRCLING	560-1	536 (600-1)	560-1½ 536 (600-1½)	660-2 636 (700-2)