

VORTAC TRV

117.3

Chan 120

APP CRS

298°

Rwy Idg

7276

TDZE

22

Apt Elev

24

VOR RWY 30L

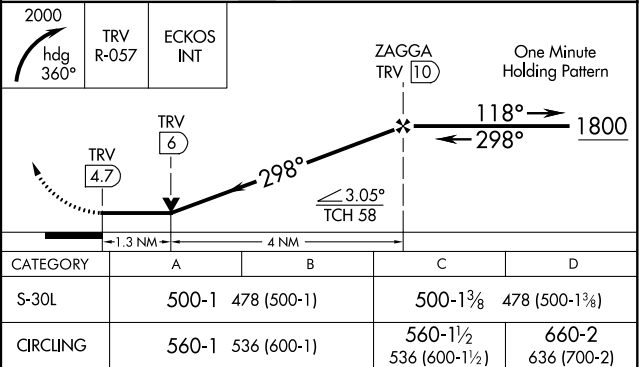
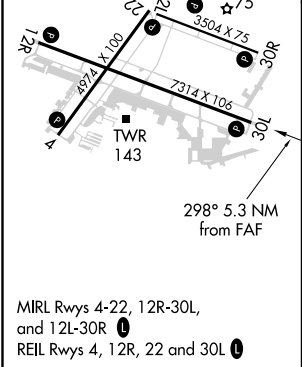
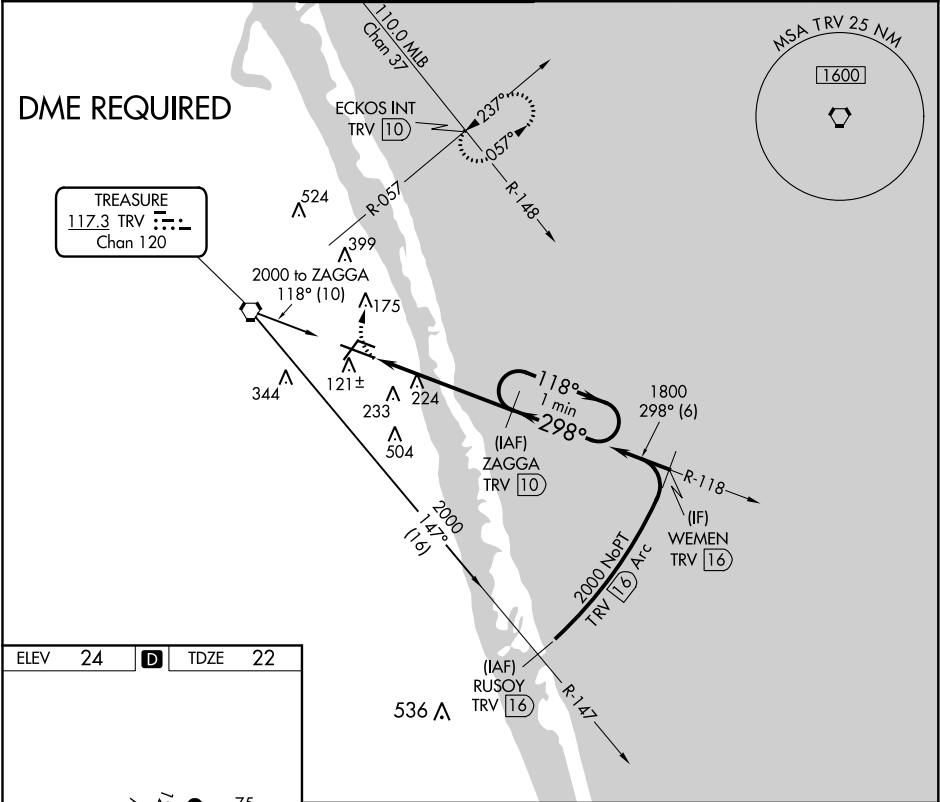
VERO BEACH RGNL (VRB)

⚠

Circling to Rwy 30R NA at night. When local altimeter setting not received, use Fort Pierce altimeter setting and increase all MDAs 40 feet. VDP NA with Fort Pierce altimeter setting. DME required.

MISSED APPROACH: Climbing right turn to 2000 on heading 360° and TRV VORTAC R-057 to ECKOS INT/TRV 10 DME and hold.

|                 |   |                                      |                   |                     |                  |
|-----------------|---|--------------------------------------|-------------------|---------------------|------------------|
| ATIS<br>120.575 | PALM BEACH APP CON<br>123.625 225.4 (N) | VERO BEACH TOWER ★<br>126.3 (CTAF) 0 | GND CON<br>127.45 | CLNC DEL<br>134.975 | UNICOM<br>122.95 |
|-----------------|---|--------------------------------------|-------------------|---------------------|------------------|



SE-3, 31 DEC 2020 to 28 JAN 2021

SE-3, 31 DEC 2020 to 28 JAN 2021