

ILS/DME I-PBI	APP CRS	Rwy Idg	8800
111.9	099°	TDZE	16
Chan 56		Apt Elev	20

ILS or LOC RWY 10L

PALM BEACH INTL (PBI)

▼

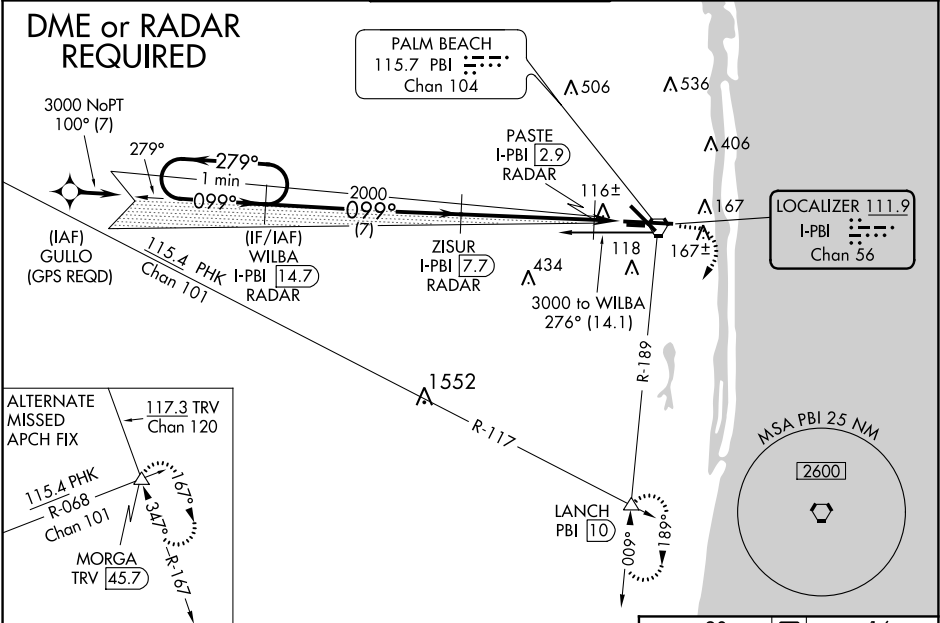
▲

DME or RADAR required. For inop ALS, increase S-LOC 10L Cat C/D visibility to 1½ SM and PASTE Fix Minimums S-LOC 10L Cat C/D visibility to RVR 5500.
#RVR 1800 authorized with the use of FD or AP or HUD to DA.

MALSR

MISSED APPROACH: Climb to 1000 then climbing right turn to 2000 on heading 240° and PBI VORTAC R-189 to LANCH INT/PBI 10 DME and hold.

D-ATIS	PALM BEACH APP CON	PALM BEACH TOWER	GND CON	CLNC DEL
123.75	128.3 317.4	119.1 257.8	121.9 284.6	121.6 284.6



VGSI and ILS glidepath not coincident (VGSI Angle 3.00/TCH 68).		1000	2000	PBI	LANCH
One Minute Holding Pattern		↑	hdg 240°	R-189	△
3000		279°	099°	2000	
GS 3.00° TCH 52					
WILBA I-PBI 14.7 RADAR		ZISUR I-PBI 7.7 RADAR	PASTE I-PBI 2.9 RADAR	I-PBI 1.6	
7 NM		4.8 NM	1.3 NM		
CATEGORY	A	B	C	D	
S-ILS 10L#	216/24 200 (200-½)				
S-LOC 10L	500/24	484 (500-½)	500/50	484 (500-1)	
☐ CIRCLING	560-1	540 (600-1)	680-1¾ 660 (700-1¾)	780-2½ 760 (800-2½)	
PASTE FIX MINIMUMS					
S-LOC 10L	380/24	364 (400-½)	380/35	364 (400-¾)	
☐ CIRCLING	560-1	540 (600-1)	680-1¾ 660 (700-1¾)	780-2½ 760 (800-2½)	
WEST PALM BEACH, FLORIDA		26°41'N-80°06'W		PALM BEACH INTL (PBI)	
Amdt 27 05JAN17				ILS or LOC RWY 10L	

ELEV 20

TDZE 16

*LOC only.

HIRL Rwy 10L-28R

REIL Rws 10R, 14, 28L, 28R and 32

MIRL Rws 14-32 and 10R-28L

FAF to MAP 6.1 NM

Knots	60	90	120	150	180
Min:Sec	6:06	4:04	3:03	2:26	2:02