

SE-3, 31 DEC 2020 to 28 JAN 2021

DEPARTURE ROUTE DESCRIPTION

**TAKEOFF RWY 10L:** Climb heading 099° to 520, then direct CRRMN, then via track 154° to BUFT, then right turn via track 244° to SHRKY, then via depicted route to LMORE. Thence. . . .

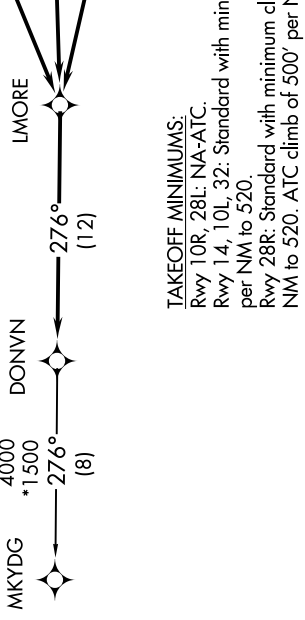
**TAKEOFF RWY 14:** Climb heading 141° to 520, then right turn direct BLNKT, then via depicted route to LMORE. Thence. . . .

**TAKEOFF RWY 28R:** Climb heading 279° to 520, then direct CRYER, then via depicted route to LMORE. Thence. . . .

**TAKEOFF RWY 32:** Climb heading 321° to 520, then left turn direct CRYER, then via depicted route to LMORE. Thence. . . .

. . . . via depicted route to DONVN. Maintain 4000 or as assigned by ATC. Expect clearance to filed altitude within 10 minutes after departure.

MKYDGD TRANSITION (LMORE2.MKYDGD)



TOP ALTITUDE:  
4000

NOTE: For Turbojets only.  
NOTE: If unable to accept minimum climb rates, advise ATC on initial contact.  
NOTE: Transponder code will be issued via PDC or Palm Beach CLNC DEL.  
NOTE: DME/DME/IRU or GPS required.  
NOTE: RADAR required.  
NOTE: RNAV 1.  
NOTE: For non-GPS equipped aircraft: PHK and PBI DMEs must be operational for takeoff Rwy 10L. FLL DME must be operational for takeoff Rwy 14.

D-ATIS 123.75  
CLNC DEL 121.6 284.6  
GND CON 121.9 284.6  
PALM BEACH TOWER 119.1 257.8  
PALM BEACH DEP CON 128.3 317.4 (North)  
125.2 343.6 (South)



SE-3, 31 DEC 2020 to 28 JAN 2021