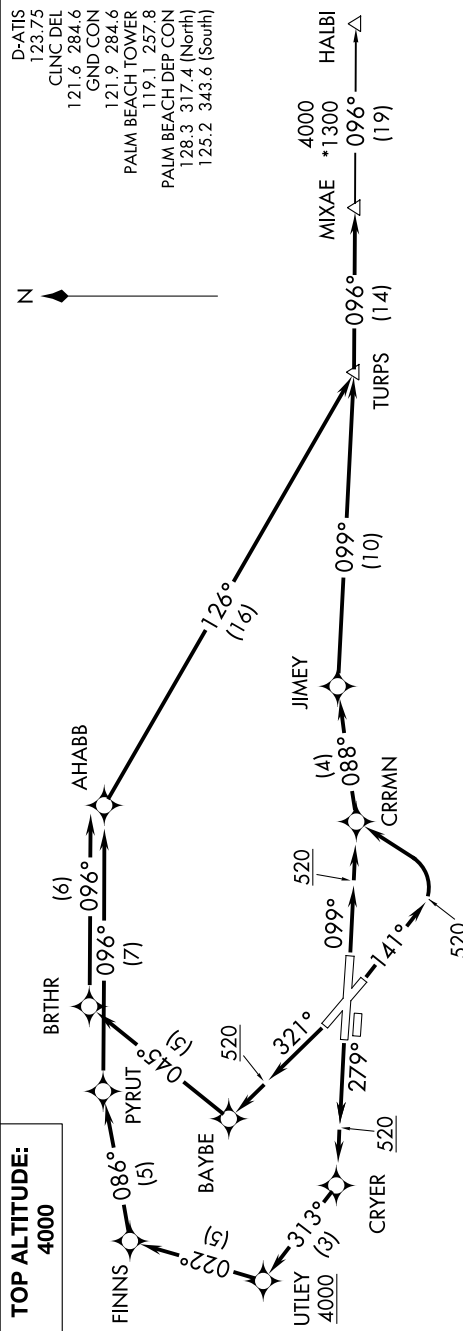


SE-3, 31 DEC 2020 to 28 JAN 2021

MIXAE TWO DEPARTURE (RNAV)



**DEPARTURE ROUTE DESCRIPTION**

**TAKEOFF RWY 10L:** Climb heading 099° to 520, then direct CRRMN, then via depicted route to TURPS, thence. . . .

**TAKEOFF RWY 14:** Climb heading 141° to 520, then turn left direct CRRMN, then via depicted route to TURPS, thence. . . .

**TAKEOFF RWY 28R:** Climb heading 279° to 520, then direct CRYER, then via depicted route to TURPS, thence. . . .

**TAKEOFF RWY 32:** Climb heading 321° to 520, then direct BAYBE, then via depicted route to TURPS, thence. . . .

. . . . via depicted route to MIXAE. Maintain 4000 or as assigned by ATC. Expect clearance to filed altitude within 10 minutes after departure.

**HALBI TRANSITION (MIXAE2.HALBI)**

**NOTE:** For Turbojets only.  
**NOTE:** If unable to accept minimum climb rates, advise ATC on initial contact.  
**NOTE:** Transponder code will be issued via PDC or Palm Beach CLNC DEL.  
**NOTE:** DME/DME/IRU or GPS required.  
**NOTE:** RADAR required.  
**NOTE:** RNAV 1.  
**NOTE:** For non-GPS equipped aircraft: FLL and PBI DMEs must be operational for takeoff Rwy 10L, 14, FLL, PBI, and PHK DMEs must be operational for takeoff Rwy 28R, 32.

**TAKEOFF MINIMUMS:**  
Rwy 10R, 28L: NA-ATC.  
Rwy 14, 10L, 32: Standard with minimum climb of 500' per NM to 520.  
Rwy 28R: Standard with minimum climb of 500' per NM to 520. ATC climb of 500' per NM to 4000.

NOTE: Chart not to scale.

MIXAE TWO DEPARTURE (RNAV)

SE-3, 31 DEC 2020 to 28 JAN 2021