

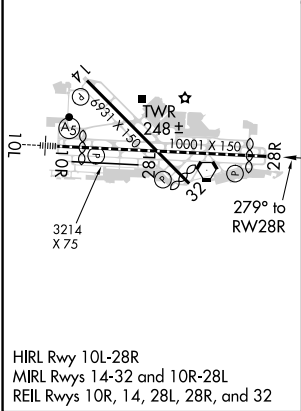
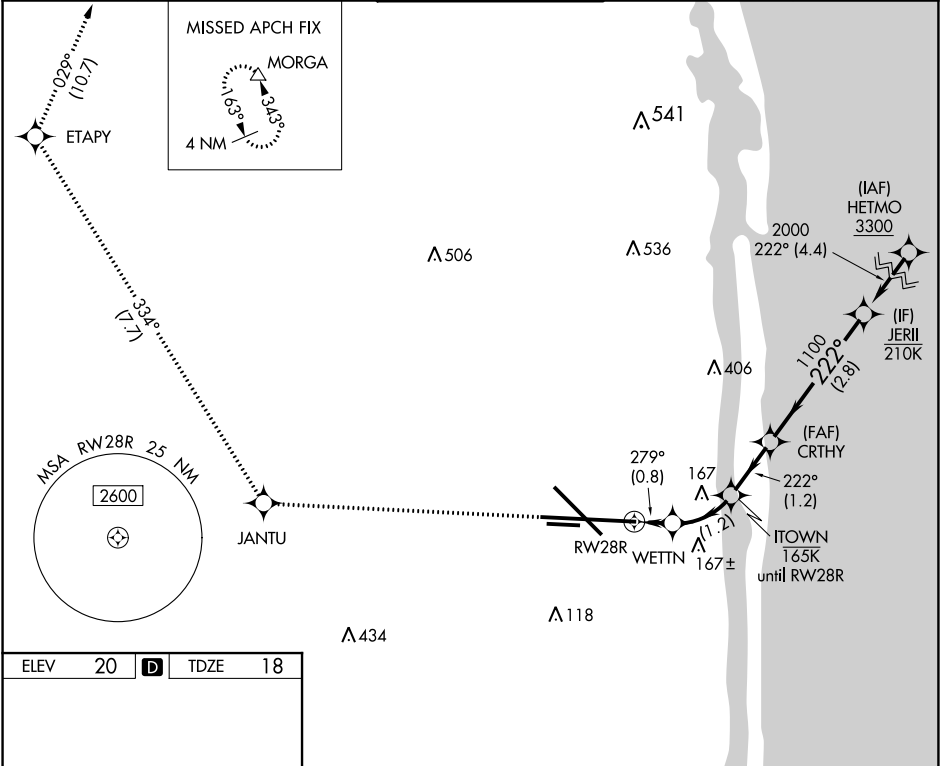
APP CRS	Rwy Idg	9189
279°	TDZE	18
	Apt Elev	20

RNAV (RNP) W RWY 28R

PALM BEACH INTL (PBI)

<p>⚠ For uncompensated Baro-VNAV systems, procedure NA below 4°C (40°F) or above 54°C (130°F). RF required. GPS required.</p>	<p>MISSED APPROACH: Climb to 2000 on the final approach track to Rwy 28R and direct JANTU then track 334° to ETAPY then track 029° to MORGA and hold.</p>
--	--

D-ATIS 123.75	PALM BEACH APP CON 128.3 317.4	PALM BEACH TOWER 119.1 257.8	GND CON 121.9 284.6	CLNC DEL 121.6 284.6
------------------	-----------------------------------	---------------------------------	------------------------	-------------------------



2000	Final App tr to RWY 28R	JANTU	tr 334°	ETAPY	tr 029°	MORGA	JERII
VGSi and RNAV glidepath not coincident (VGSi Angle 3.00/TCH 70).							CRTHY
ITOWN							2000
RWY 28R							GP 3.00° TCH 60
-0.8 NM - 1.2 NM - 1.2 NM - 2.8 NM							
CATEGORY							D
RNP 0.30 DA							725-2½ 707 (800-2½)
AUTHORIZATION REQUIRED							

SE-3, 31 DEC 2020 to 28 JAN 2021

SE-3, 31 DEC 2020 to 28 JAN 2021