
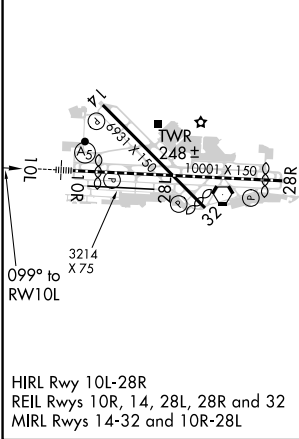
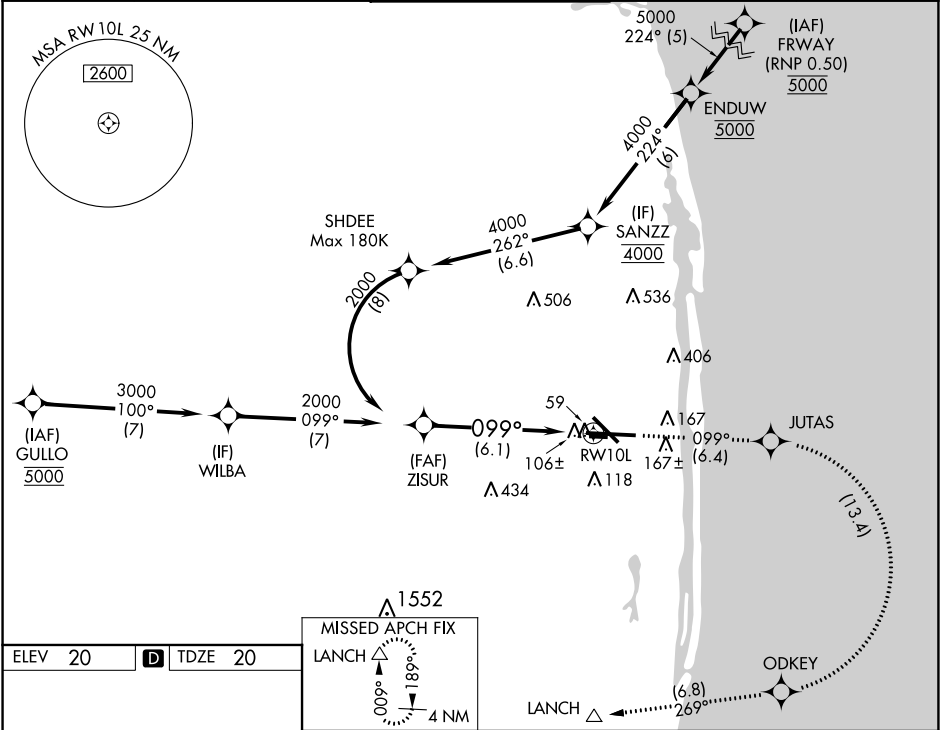


APP CRS	Rwy Idg	8800
099°	TDZE	20
	Apt Elev	20

RNAV (RNP) Z RWY 10L  
PALM BEACH INTL (PBI)

<p><b>⚠</b> For uncompensated Baro-VNAV systems, procedure NA below 2°C (36°F) or above 49°C (120°F). RF required. GPS required. For inop MALSR, increase RNP 0.11 all Cats visibility to RVR 5000 and 0.30 all Cats visibility to RVR 6000.</p>	<p>MALSR</p> 	<p>MISSED APPROACH: Climb to 2000 on track 099° to JUTAS and right turn to ODKEY and on track 269° to LANCH and hold.</p>
--	--	---

D-ATIS <b>123.75</b>	PALM BEACH APP CON <b>128.3 317.4</b>	PALM BEACH TOWER <b>119.1 257.8</b>	GND CON <b>121.9 284.6</b>	CLNC DEL <b>121.6</b>
-------------------------	--	--	-------------------------------	--------------------------



<p>ZISUR 2000</p> <p>2000</p> <p>GP 3.00° TCH 52</p> <p>See planview for multiple IF locations.</p> <p>6.1 NM</p>				
CATEGORY	A	B	C	D
RNP 0.11 DA	338/26 322 (400-½)			
RNP 0.30 DA	448/40 432 (500-¾)			

**AUTHORIZATION REQUIRED**

SE-3, 31 DEC 2020 to 28 JAN 2021

SE-3, 31 DEC 2020 to 28 JAN 2021