

APP CRS	Rwy Idg	9189
279°	TDZE	18
	Apt Elev	20

RNAV (GPS) X RWY 28R
PALM BEACH INTL (PBI)

<div><div>V</div><div>A</div></div>	DME/DME RNP-0.3 NA.		MISSED APPROACH: (Do not exceed 230 KIAS until JANTU) Climb to 2000 direct JANTU and track 006° to MORGa and hold.	
	D-ATIS 123.75	PALM BEACH APP CON 128.3 317.4	PALM BEACH TOWER 119.1 257.8	GND CON 121.9 284.6

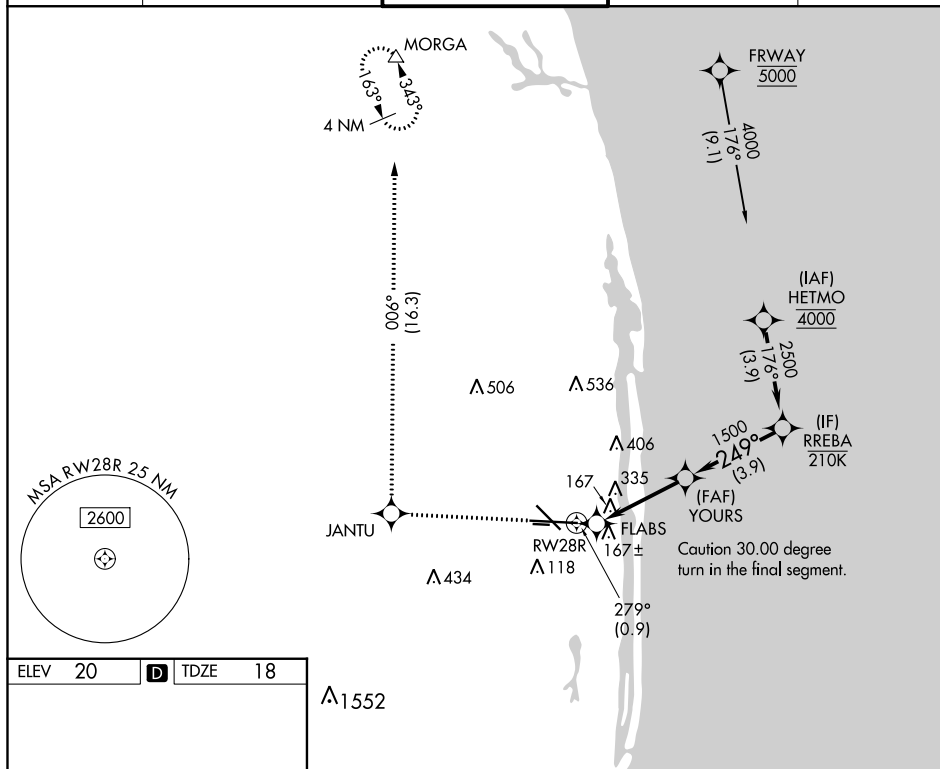


Figure 1 illustrates a non-coincident VGSI and descent angle scenario. The top left shows a plan view of the runway layout, including RWY 10L, 10R, 28L, and 28R. RWY 10L has a VGSI angle of 3.00° and a descent angle of 3.04°. The top right shows a profile view of the runway with a 249° descent angle. The bottom part shows a table of MDA and CIRCLING altitudes for different categories.

CATEGORY	A	B	C	D
LNNAV MDA	560/55	542 (600-1)	560-1 ³ / ₄	542 (600-1 ³ / ₄)
C CIRCLING	560-1	540 (600-1)	680-1 ³ / ₄ 660 (700-1 ³ / ₄)	780-2 ¹ / ₂ 760 (800-2 ¹ / ₂)