

WAAS
CH **45518**
W28A

APP CRS
279°

Rwy Idg
TDZE **18**
Apt Elev **20**

RNAV (GPS) Y RWY 28R

PALM BEACH INTL (PBI)

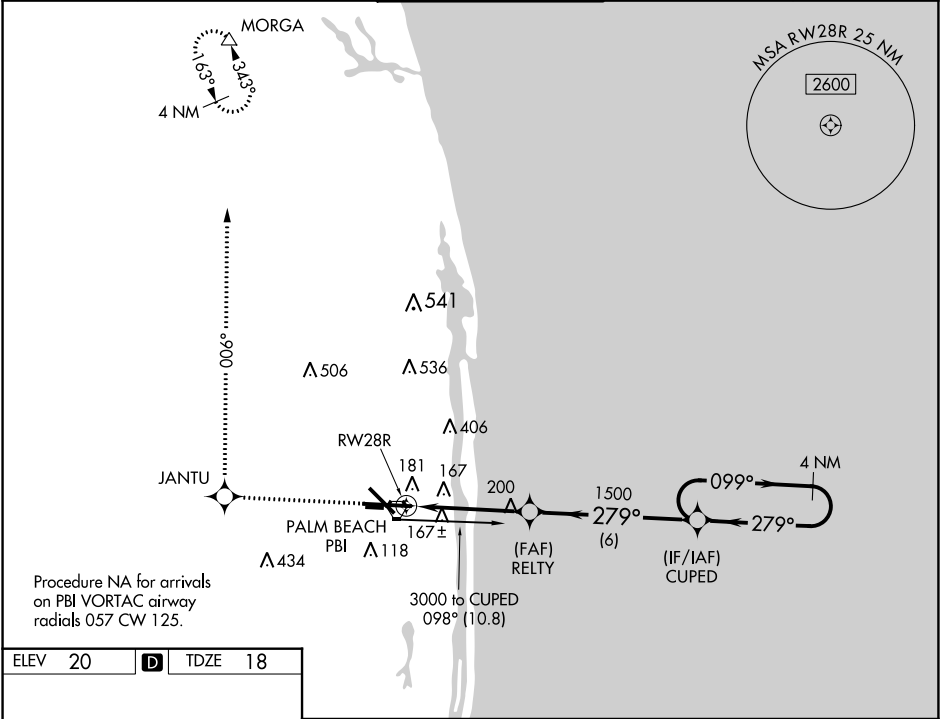
▼

▲

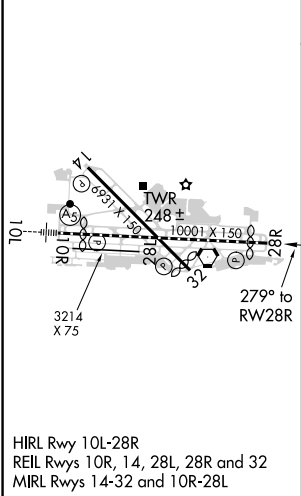
For uncompensated Baro-VNAV systems, LNAV/VNAV NA below -15°C (5°F) or above 48°C (118°F).
DME/DME RNP-0.3 NA.

MISSED APPROACH: Climb to 2000 direct JANTU and via track 006° to MORG A and hold.

D-ATIS 123.75	PALM BEACH APP CON 128.3 317.4	PALM BEACH TOWER 119.1 257.8	GND CON 121.9 284.6	CLNC DEL 121.6 284.6
-------------------------	--	--	-------------------------------	--------------------------------



ELEV 20	D	TDZE 18
---------	----------	---------



2000	JANTU	MORGA	VCSI and RNAV glidepath not coincident (VGSi Angle 3.00/TCH 70).	
↑	✱	tr 006°	△	
* LNAV only.		RELTY	CUPED	4 NM Holding Pattern
* 1.2 NM to RW28R		1500	099°	3000
RW28R		1500	279°	GP 3.00° TCH 58
1.2		3.2 NM	6 NM	
CATEGORY	A	B	C	D
LPV DA	356/60		338 (400-1½)	
LNAV/VNAV DA	484-1½		466 (500-1½)	
LNAV MDA	460/50	442 (500-1)	460/60 442 (500-1¼)	460-1½ 442 (500-1½)
C CIRCLING	560-1	540 (600-1)	680-1¾ 660 (700-1¾)	780-2½ 760 (800-2½)