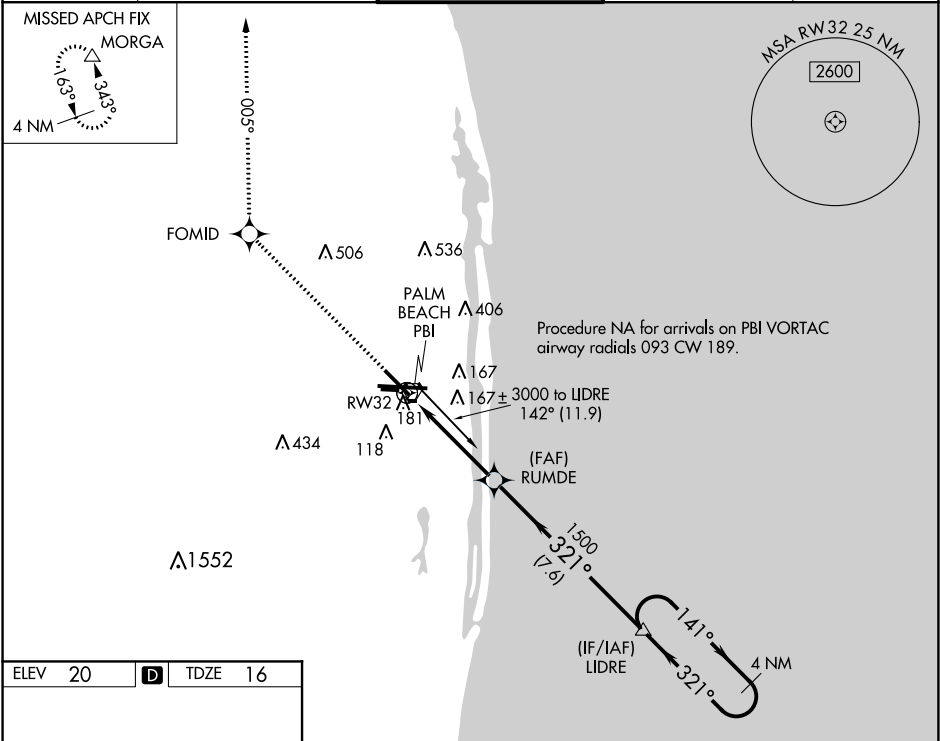


WAAS CH <b>62903</b> <b>W32A</b>	APP CRS <b>321°</b>	Rwy Idg <b>6513</b> TDZE <b>16</b> Apt Elev <b>20</b>
--	------------------------	---

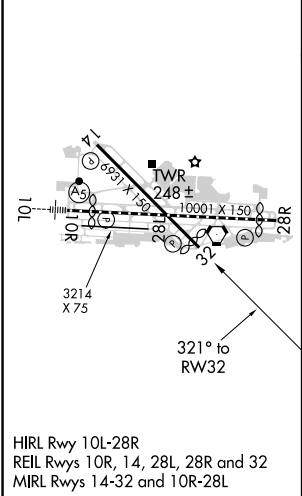
RNAV (GPS) Y RWY 32  
PALM BEACH INTL (PBI)

<p><b>⚠</b> For uncompensated Baro-VNAV systems, LNAV/VNAV NA below -15°C (5°F) or above 48°C (118°F). DME/DME RNP-0.3 NA. Helicopter visibility reduction below ¾ SM NA.</p>	<p>MISSED APPROACH: Climb to 2000 direct FOMID and via track 005° to MORG A and hold.</p>
---	---

D-ATIS <b>123.75</b>	PALM BEACH APP CON <b>128.3 317.4</b>	PALM BEACH TOWER <b>119.1 257.8</b>	GND CON <b>121.9 284.6</b>	CLNC DEL <b>121.6 284.6</b>
-------------------------	--	--	-------------------------------	--------------------------------



ELEV 20	<b>D</b>	TDZE 16
---------	----------	---------



2000	FOMID	tr 005°	MORG A	VGSI and RNAV glidepath not coincident (VGSI Angle 3.25/TCH 57).
				4 NM Holding Pattern
*LNAV only.		*1.1 NM to RW32	RUMDE	LIDRE
			1500	141° → 3000
			321°	← 321°
			1500	GP 3.00° TCH 57
			1.1 NM	3.3 NM
			7.6 NM	
CATEGORY	A	B	C	D
LPV DA	336-1	320 (400-1)		
LNAV/VNAV DA	431-1½	415 (500-1½)		
LNAV MDA	440-1	424 (500-1)	440-1¼	424 (500-1¼)
<b>C</b> CIRCLING	560-1	540 (600-1)	680-1¾ 660 (700-1¾)	780-2½ 760 (800-2½)

SE-3, 31 DEC 2020 to 28 JAN 2021

SE-3, 31 DEC 2020 to 28 JAN 2021