

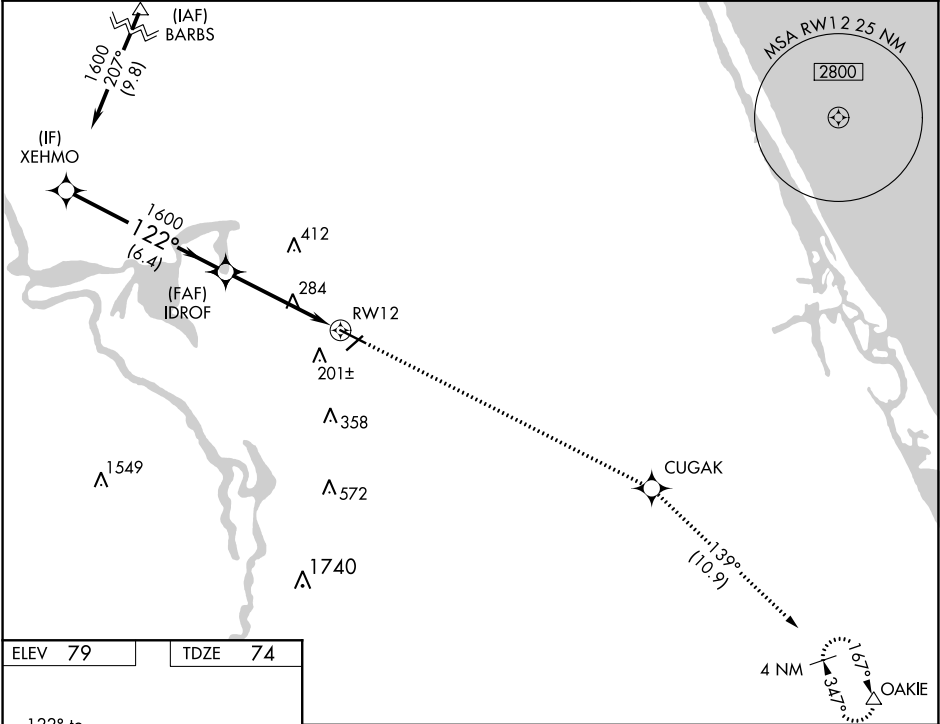
WAAS CH 50300 W12A	APP CRS 122°	Rwy Idg TDZE Apt Elev	6001 74 79
--	------------------------	-----------------------------	---------------------------------------

RNAV (GPS) RWY 12

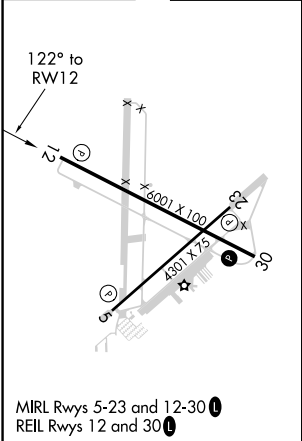
DELAND MUNI-SIDNEY H TAYLOR FIELD (DED)

RNP APCH.	For uncompensated Baro-VNAV systems, LNAV/VNAV NA below -15°C (5°F) or above 54°C (130°F). Baro-VNAV and VDP NA when using Daytona Beach Intl altimeter setting. Rwy 12 helicopter visibility reduction below ¾ SM NA. When local altimeter setting not received use Daytona Beach Intl altimeter setting increase all DA/MDA 40 feet, increase LNAV/VNAV visibility ½ SM all Cats.	MISSED APPROACH: Climb to 2000 direct CUGAK then on track 139° to OAKIE and hold.
-----------	---	---

AWOS-3 119.575	DAYTONA APP CON 125.35 322.3	UNICOM 123.075 (CTAF) 0
--------------------------	--	-----------------------------------



ELEV 79	TDZE 74
----------------	----------------



VGSI and RNAV glidepath not coincident (VGSI Angle 3.00/TCH 51).			
XEHMO	IDROF	2000 CUGAK	OAKIE
1600	1600	1600	1600
GP 3.00° TCH 40			
6.4 NM	3.1 NM	1.5 NM	
CATEGORY	A	B	C
LPV DA	404-1¼	330 (400-1¼)	
LNAV/VNAV DA	528-1½	454 (500-1½)	
LNAV MDA	600-1	526 (600-1)	600-1½ 526 (600-1½)