

WAAS CH <b>82101</b> <b>W05A</b>	APP CRS <b>049°</b>	Rwy Idg TDZE <b>12</b> Apt Elev <b>13</b>	<b>5580</b>
--	------------------------	---	-------------

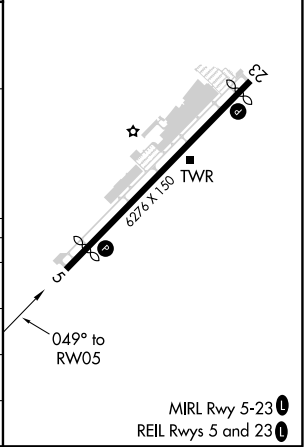
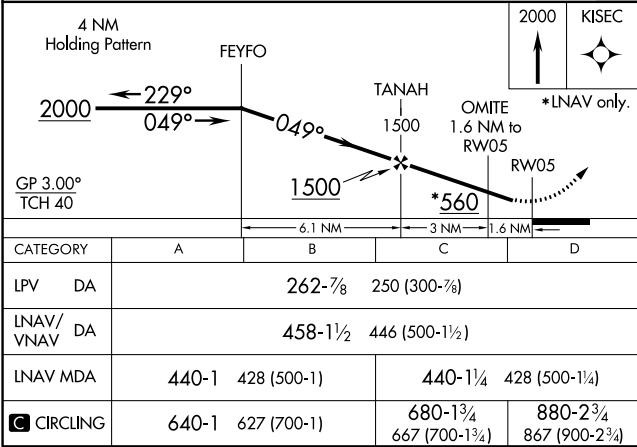
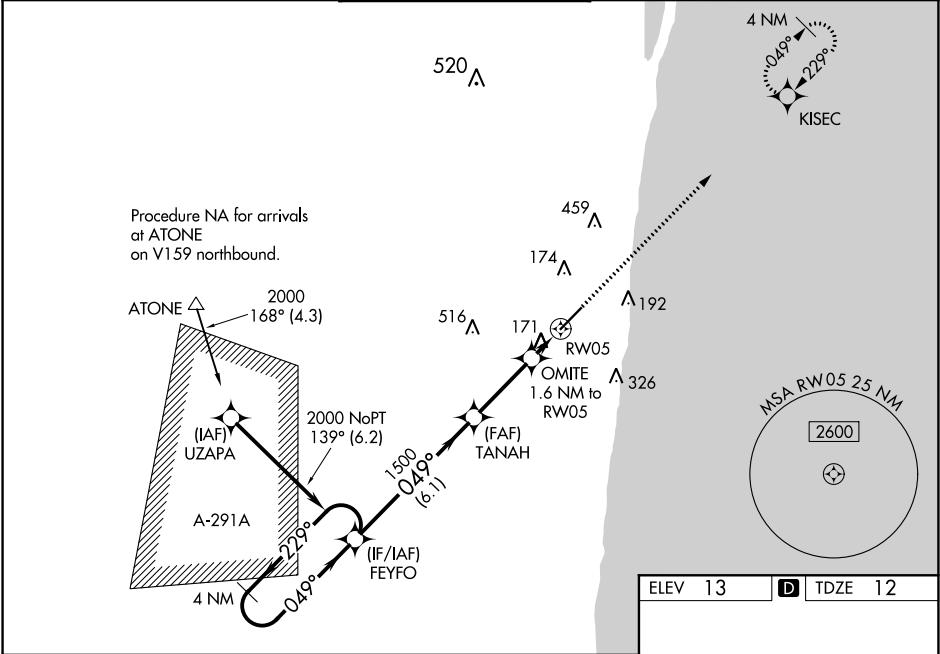
RNAV (GPS) RWY 5

BOCA RATON (BCT)

**⚠** Baro-VNAV NA when using Palm Beach Intl altimeter setting. For uncompensated Baro-VNAV systems, LNAV/VNAV NA below -15°C (5°F) or above 54°C (130°F). DME/DME RNP-0.3 NA. When local altimeter setting not received, use Palm Beach Intl altimeter setting and increase all DA 43 feet and all MDA 60 feet and increase LPV all Cats and LNAV/VNAV all Cats and LNAV Cats C and D visibility 1/8 mile and Circling Cats C and D visibility 1/4 mile. In minimum visibility conditions bright lights on highway 1/4 mile north of airport may be mistaken for runway lights. Helicopter visibility reduction below 3/4 SM NA.

MISSED APPROACH:  
Climb to 2000 direct  
KISEC and hold.

AWOS-3 <b>121.125</b>	PALM BEACH APP CON <b>125.2 343.6</b>	BOCA RATON TOWER★ <b>118.425 (CTAF) 0</b>	GND CON <b>121.8</b>	CLNC DEL <b>121.8</b>	CLNC DEL <b>127.35</b> (when twr closed)
--------------------------	--	--	-------------------------	--------------------------	--



SE-3, 31 DEC 2020 to 28 JAN 2021

SE-3, 31 DEC 2020 to 28 JAN 2021