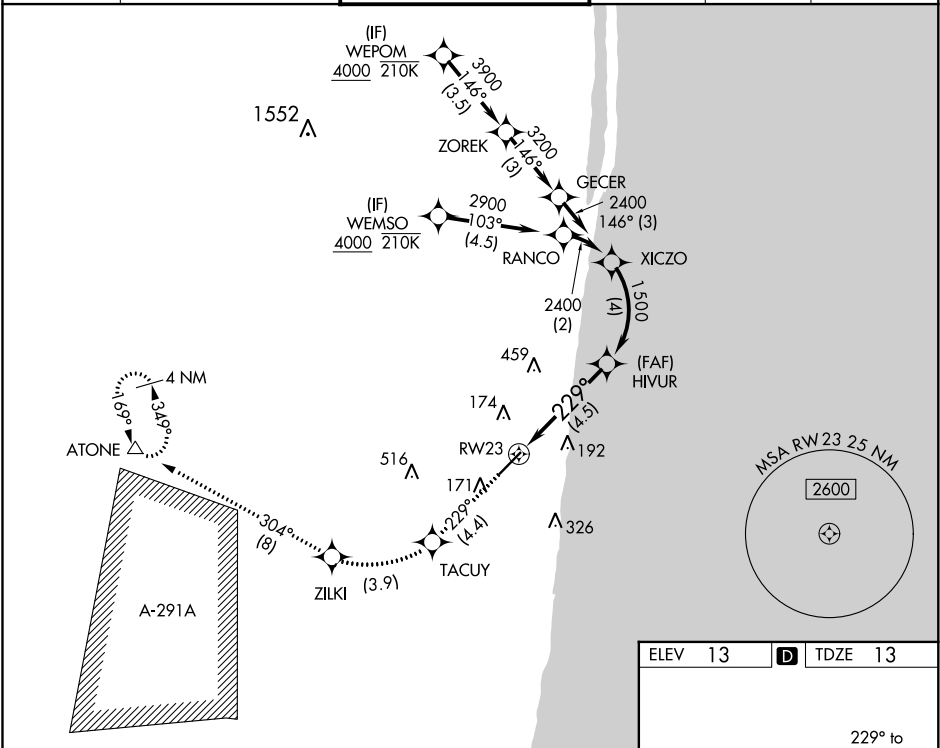


APP CRS	Rwy Idg	5898
229°	TDZE	13
	Apt Elev	13

RNAV (RNP) Z RWY 23

BOCA RATON (BCT)

RNP AR APCH. RF Required.			MISSED APPROACH: Climb to 2100 on track 229° to TACUY, right turn to ZILKI and track 304° to ATONE and hold.		
▼ For uncompensated Baro-VNAV systems, procedure NA below -15°C or above 54°C. In minimum visibility conditions, bright lights on highway ¼ mile north of airport may be mistaken for runway lights.					
AWOS-3 121.125	PALM BEACH APP CON 125.2 343.6	BOCA RATON TOWER★ 118.425 (CTAF) 0	GND CON 121.8	CLNC DEL 121.8	CLNC DEL 127.35 (when twr closed)



2100

↑

tr 229°

ZILKI

↘

tr 304°

ATONE

△

See planview for multiple IF locations.

VGSI and RNAV glidepath not coincident (VGSI Angle 3.00/TCH 40).

RW23

229°

1500

2400

GP 3.00° TCH 55

CATEGORY	A	B	C	D
RNP 0.30 DA	519-1⅜	506 (600-1⅜)		

AUTHORIZATION REQUIRED

MIRL Rwy 5-23 0
REIL Rws 5 and 23 0