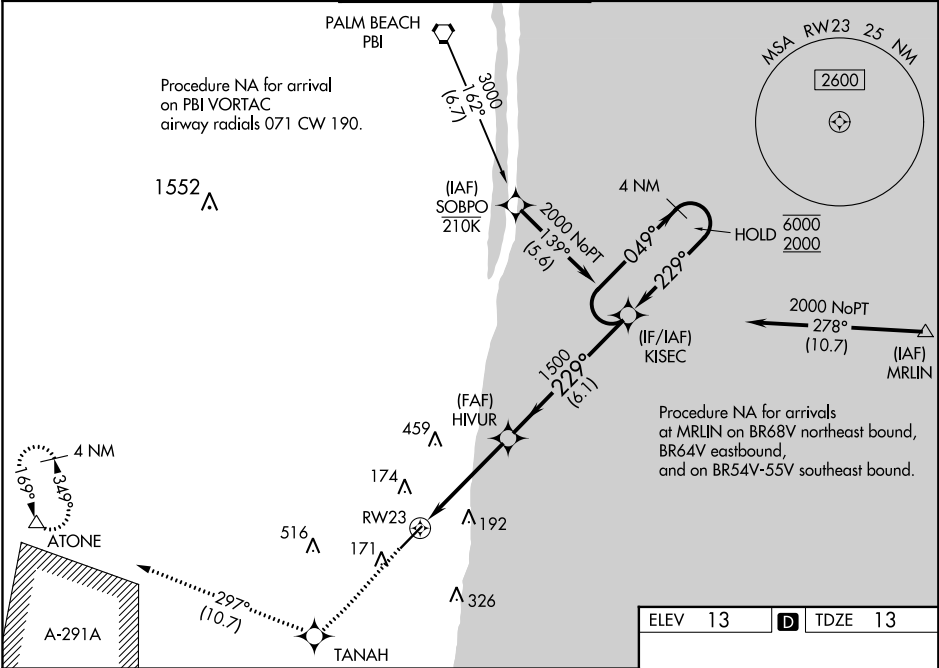


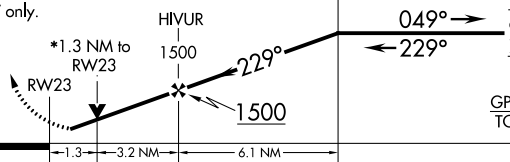
| | | | |
|--|------------------------|---|-------------|
| WAAS CH 42801 W23A | APP CRS 229° | Rwy Idg TDZE 13 Apt Elev 13 | 5898 |
|--|------------------------|---|-------------|

RNAV (GPS) Y RWY 23

BOCA RATON (BCT)

| | | | | | |
|---|-----------------------------------|--|------------------|--|---|
| RNP APCH. | | | | MISSED APPROACH: Climb to 2100 direct TANAH and on track 297° to ATONE and hold. | |
| Rwy 23 helicopter visibility reduction below ¾ SM NA. For uncompensated Baro-VNAV systems, procedure NA below -15°C or above 54°C. In minimum visibility conditions, bright lights on highway ¼ mile north of airport may be mistaken as runway lights. | | | | | |
| AWOS-3 121.125 | PALM BEACH APP CON 125.2 343.6 | BOCA RATON TOWER ★ 118.425 (CTAF) 0 | GND CON 121.8 | CLNC DEL 121.8 | CLNC DEL 127.35 (when twr closed) |



| | | | | | | |
|---|-------------------|---------------------------|------------|---|----------------------------|---------------------------|
| 2100 ↑ | TANAH ✦ | tr 297° | ATONE △ | VGSI and RNAV glidepath not coincident (VGSI Angle 3.00/TCH 40). | | 4 NM Holding Pattern |
| *LNAV only. | | | | KISEC | | |
|  | | | | HIVEUR 1500 | 049° → 6000 ← 229° 2000 | GP 3.00° TCH 55 |
| 1.3 | | | | 3.2 NM | 6.1 NM | |
| CATEGORY | | A | | B | C | D |
| LPV | DA | 263-7/8 250 (300-7/8) | | | | |
| LNAV/ VNAV | DA | 357-1 1/8 344 (400-1 1/8) | | | | |
| LNAV MDA | 480-1 467 (500-1) | | | 480-1 3/8 467 (500-1 3/8) | | |
| C CIRCLING | 680-1 667 (700-1) | | | 680-1 3/4 667 (700-1 3/4) | | 880-2 3/4 867 (900-2 3/4) |

