
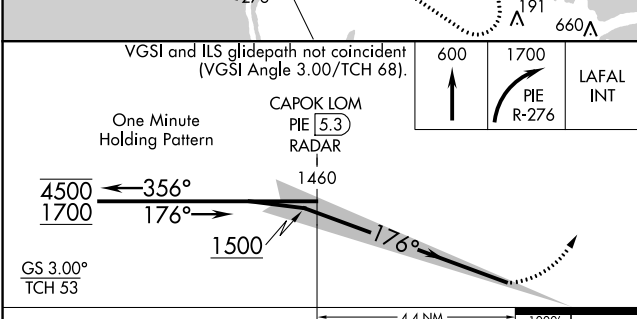
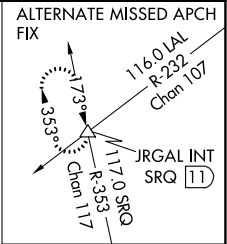
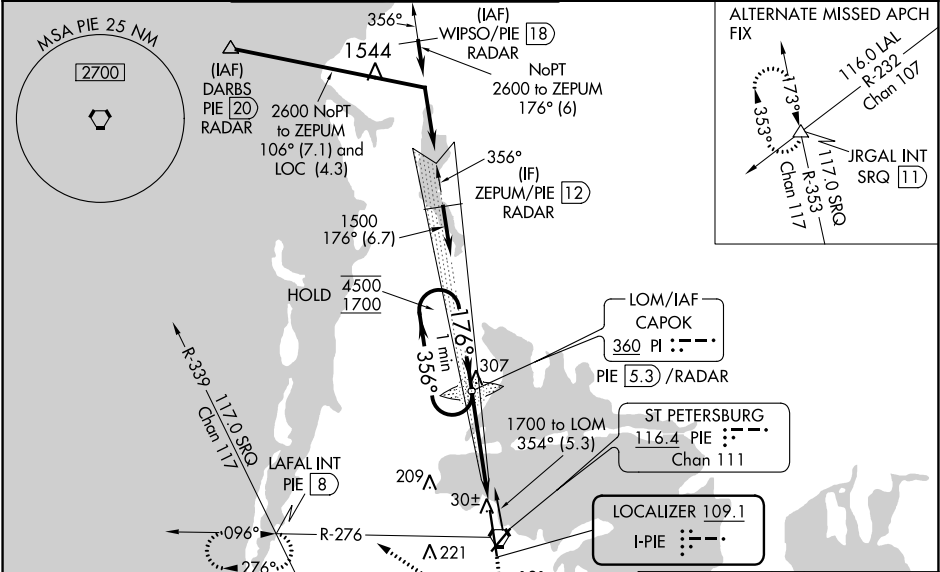


LOC I-PIE 109.1	APP CRS 176°	Rwy Idg TDZE Apt Elev 9180 7 11
---------------------------	------------------------	---

ILS RWY 18 (SA CAT I & II)
ST PETE-CLEARWATER INTL (PIE)

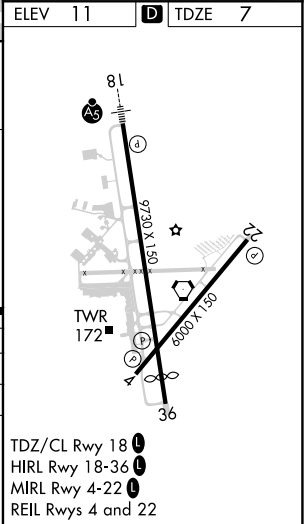
DME, RADAR, or ADF required.		<div>MALSR</div> <div></div>	<div>MISSED APPROACH: Climb to 600 then climbing right turn to 1700 on PIE VORTAC R-276 to LAFAL INT/PIE 8 DME and hold.</div>
<div><div>T</div><div>A</div></div>	<div>SA CAT I: Requires specific OPSPEC, MSPEC, or LOA approval and use of HUD to DH. SA CAT II: Reduced lighting requires specific OPSPEC, MSPEC, or LOA approval and use of autoland or HUD to touchdown. SA CAT I & II S-ILS 18 NA when control tower closed.</div>		

ATIS 134.5	TAMPA APP CON 125.3 316.05	ST PETERSBURG-CLEARWATER TOWER ★ 118.3 (CTAF) 0 257.8	GND CON 121.9 348.6	CLNC DEL 120.6 350.2	UNICOM 122.95
-----------------------------	---	--	--------------------------------------	---------------------------------------	--------------------------------



CATEGORY	A	B	C	D
S-ILS 18	SA CAT I	RA 157/14	150	DA 157
S-ILS 18	SA CAT II	RA 107/12	100	DA 107

SA CATEGORY I & II ILS - SPECIAL AIRCREW & AIRCRAFT CERTIFICATION REQUIRED



SE-3, 31 DEC 2020 to 28 JAN 2021

SE-3, 31 DEC 2020 to 28 JAN 2021