

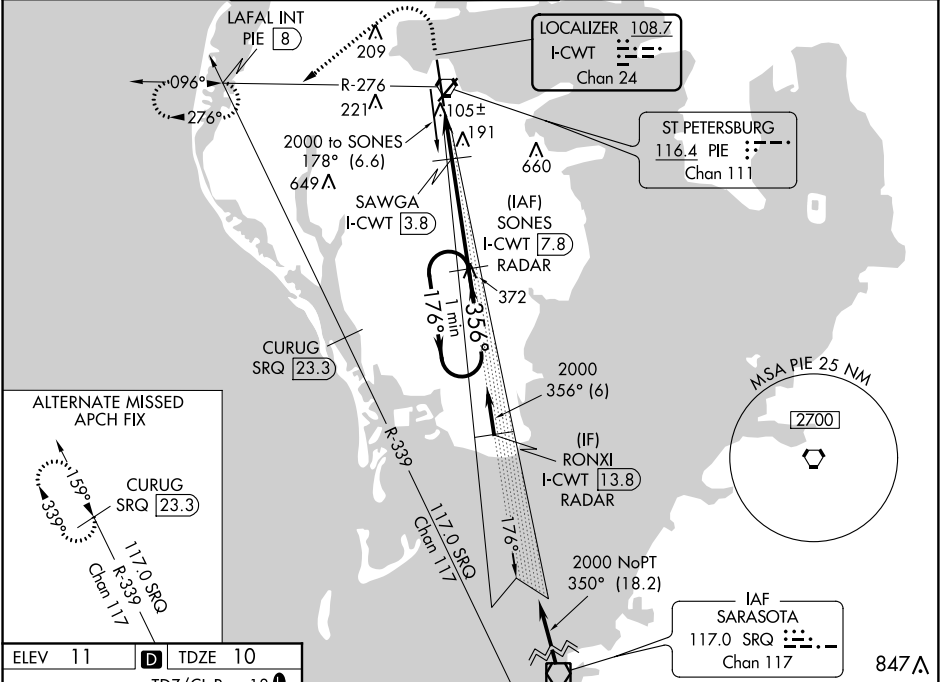
LOC/DME I-CWT <b>108.7</b> Chan <b>24</b>	APP CRS <b>356°</b>	Rwy Idg TDZE Apt Elev <b>8720</b> <b>10</b> <b>11</b>
---	------------------------	--

AL-625 (FAA)

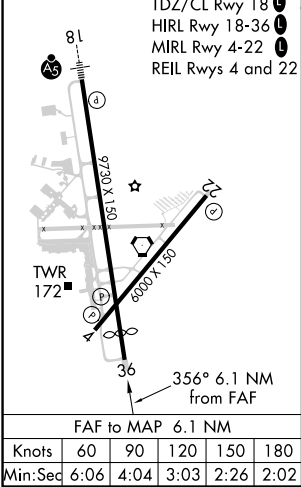
ILS or LOC RWY 36  
ST PETE-CLEARWATER INTL (PIE)

DME or RADAR required.			MISSED APPROACH: Climb to 600 then climbing left turn to 2000 on PIE VORTAC R-276 to LAFAL INT/PIE 8 DME and hold.		
------------------------	--	--	--	--	--

ATIS <b>134.5</b>	TAMPA APP CON <b>125.3 316.05</b>	ST PETERSBURG-CLEARWATER TOWER ★ <b>118.3 (CTAF) 0 257.8</b>	GND CON <b>121.9 348.6</b>	CLNC DEL <b>120.6 350.2</b>	UNICOM <b>122.95</b>
----------------------	--------------------------------------	---	-------------------------------	--------------------------------	-------------------------



ELEV 11	TDZE 10
---------	---------



600		2000	LAFAL INT	SAWGA FIX MINIMUMS DME required.	
PIE R-276				SONES I-CWT 7.8 RADAR	
*LOC only.		SAWGA I-CWT 3.8	2000	One Minute Holding Pattern	
*I-CWT 1.7		*I-CWT 2.6	356°	176° → 2000	
			680*	GS 3.00° TCH 55	
				VGSi and ILS glidepath not coincident (VGSi Angle 3.00/TCH 76).	
				-0.9 -1.2 -4 NM-	
CATEGORY		A	B	C	D E
S-ILS 36		210/40		200 (200-¾)	
S-LOC 36		680/55	670 (700-1)	680-17/8 670 (700-1%)	
CIRCLING		680-1	669 (700-1)	680-1½ 669 (700-1½)	680-2 960-3 669 (700-2) 949 (1000-3)
		SAWGA FIX MINIMUMS			
S-LOC 36		380/55 370 (400-1)			
CIRCLING		520-1	509 (600-1)	640-1½ 629 (700-1½)	680-2 960-3 669 (700-2) 949 (1000-3)

SE-3, 31 DEC 2020 to 28 JAN 2021

SE-3, 31 DEC 2020 to 28 JAN 2021