

## NORTH BAY VISUAL RWY 18

AL-625 (FAA)

ST PETE-CLEARWATER INTL (PIE)  
ST PETERSBURG-CLEARWATER, FLORIDA

ATIS  
134.5  
TAMPA APP CON  
125.3 316.05  
ST PETERSBURG-CLEARWATER TOWER ★  
118.3 (CTAF) 257.8  
GND CON  
121.9 348.6  
CLNC DEL  
120.6 350.2  
UNICOM  
122.95

## RADAR REQUIRED

PROCEDURE NOT AUTHORIZED AT NIGHT  
NOT AUTHORIZED WHEN TOWER NOT IN OPERATION

Weather Minimums: 2100 feet ceiling  
and 3 miles visibility.

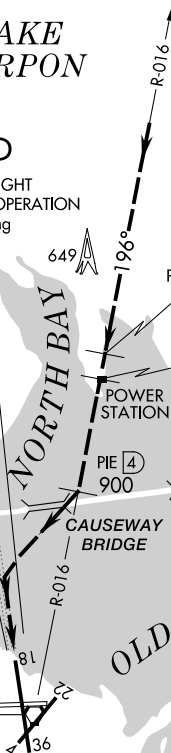
LAKE  
TARPON

GULF OF MEXICO

Vertical Guidance Navaid and Angle  
I-PIE 3.00°  
PAPI Rwy 18 3.00°

ST PETERSBURG  
116.4 PIE ::-  
Chan 111

LOCALIZER 109.1  
I-PIE ::-



## NORTH BAY VISUAL APPROACH

When cleared for a NORTH BAY VISUAL APPROACH, aircraft will proceed visually from over the power station (PIE R-016, 6 DME) heading 196° direct to the Causeway Bridge, then right turn to intercept the final approach course to Rwy 18.

## NORTH BAY VISUAL RWY 18

Amdt 6 29MAR18

27°55'N-82°41'W

ST PETERSBURG-CLEARWATER, FLORIDA  
ST PETE-CLEARWATER INTL (PIE)