

WAAS CH 61039 W18A	APP CRS 176°	Rwy Idg TDZE Apt Elev	9180 7 11
--	------------------------	-----------------------------	--------------------------------------

RNAV (GPS) RWY 18

ST PETE-CLEARWATER INTL (PIE)

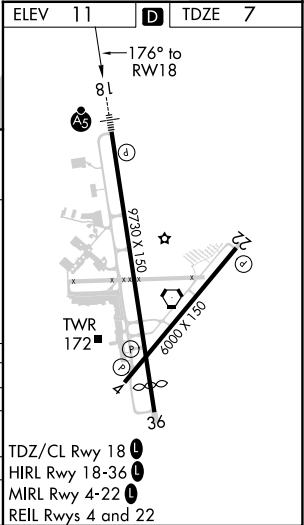
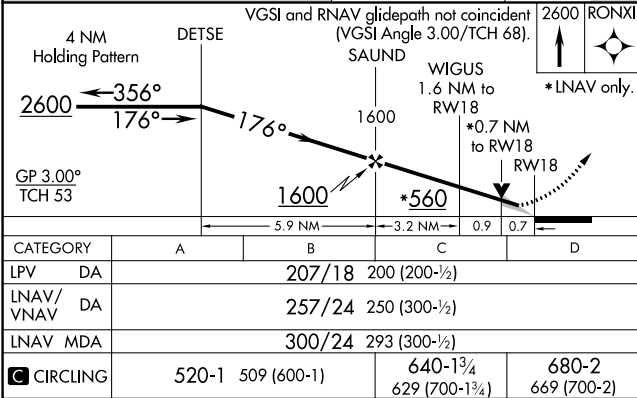
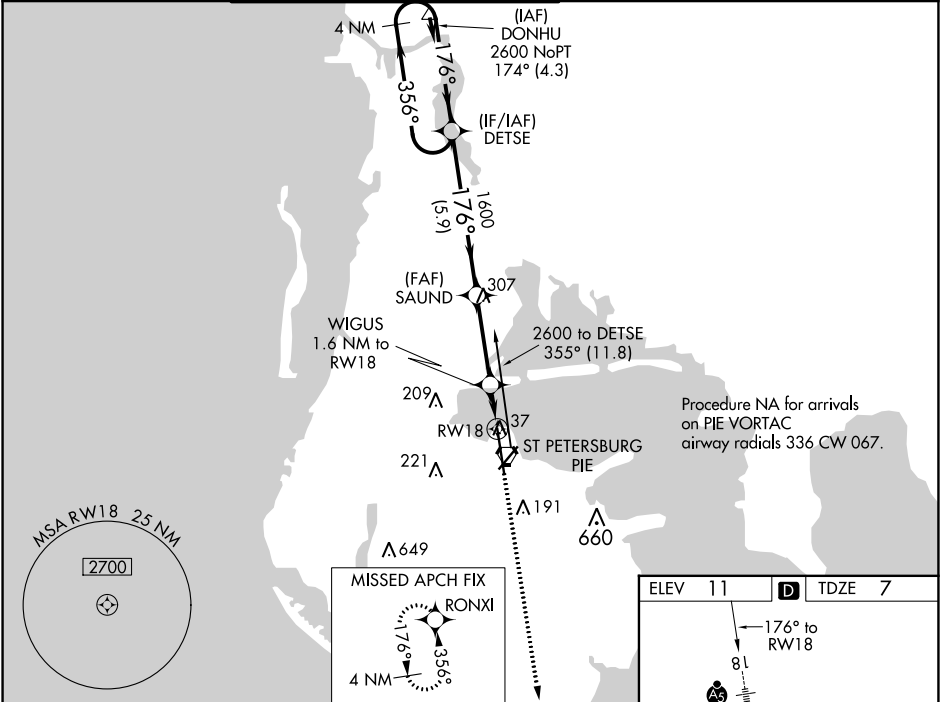
For uncompensated Baro-VNAV systems, LNAV/VNAV NA below 3°C (38°F) or above 54°C (130°F). DME/DME RNP-0.3 NA. For inop MALSR, increase LNAV/VNAV all Cats visibility to RVR 4000 and LNAV visibility Cats C/D to RVR 4500.

MALSR

A5

MISSED APPROACH:
Climb to 2600 direct
RONXI and hold.

ATIS 134.5	TAMPA APP CON 125.3 316.05	ST PETERSBURG-CLEARWATER TOWER ★ 118.3 (CTAF) 0 257.8	GND CON 121.9 348.6	CLNC DEL 120.6 350.2	UNICOM 122.95
----------------------	--------------------------------------	---	-------------------------------	--------------------------------	-------------------------



SE-3, 31 DEC 2020 to 28 JAN 2021

SE-3, 31 DEC 2020 to 28 JAN 2021