

APP CRS	Rwy Idg	5006
223°	TDZE	24
	Apt Elev	30

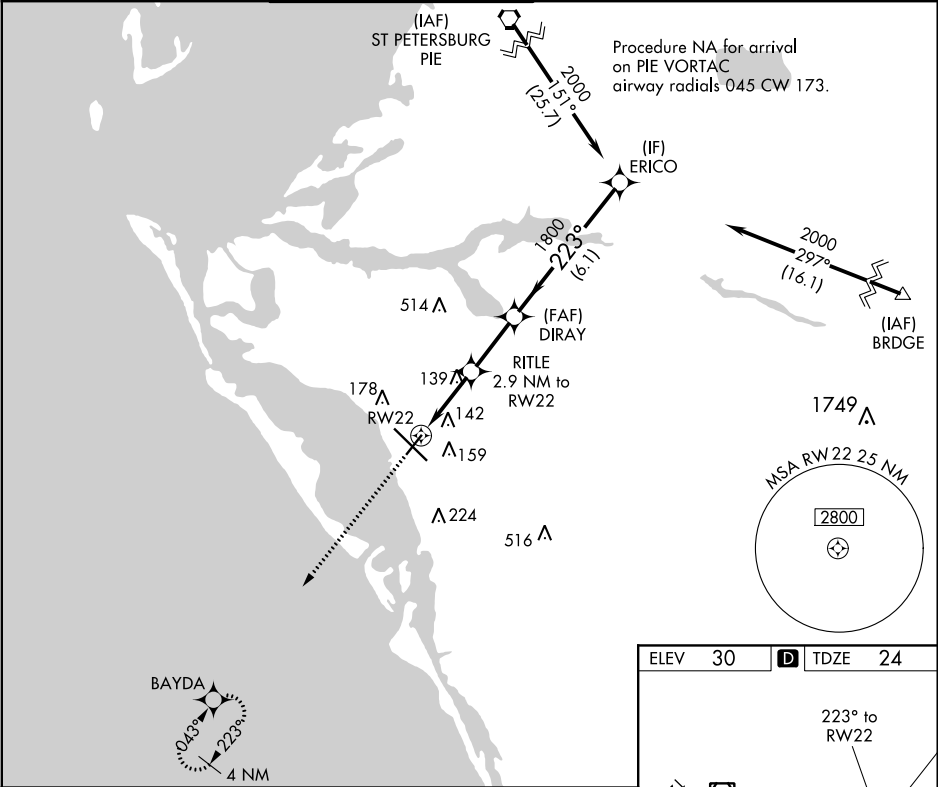
RNAV (GPS) RWY 22
SARASOTA/BRADENTON INTL (SRQ)



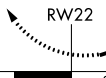
RNP APCH.

▼ Rwy 22 helicopter visibility reduction below 1 SM NA. For uncompensated Baro-VNAV systems, LNAV/VNAV NA below -15°C or above 43°C.

MISSED APPROACH: Climb to 2000 direct BAYDA and hold.

ATIS 124.375	TAMPA APP CON 119.65 353.575	SARASOTA TOWER★ 120.1(CTAF) 256.8	GND CON 121.9 273.6	CLNC DEL 118.25	UNICOM 122.95
-----------------	---------------------------------	--------------------------------------	------------------------	--------------------	------------------



2000	BAYDA	VGSi and RNAV glidepath not coincident (VGSi Angle 3.00/TCH 43).		ERICO
				2000
*LNAV only.		RITLE 2.9 NM to RW22	DIRAY 1800	
		1000*	1800	GP 3.00° TCH 57
		2.9 NM	2.5 NM	6.1 NM
CATEGORY	A	B	C	D
LNAV/ VNAV	DA	303-1 279 (300-1)		
LNAV MDA		400-1 376 (400-1)		
CIRCLING	500-1	470 (500-1)	500-1½ 470 (500-1½)	580-2 550 (600-2)

