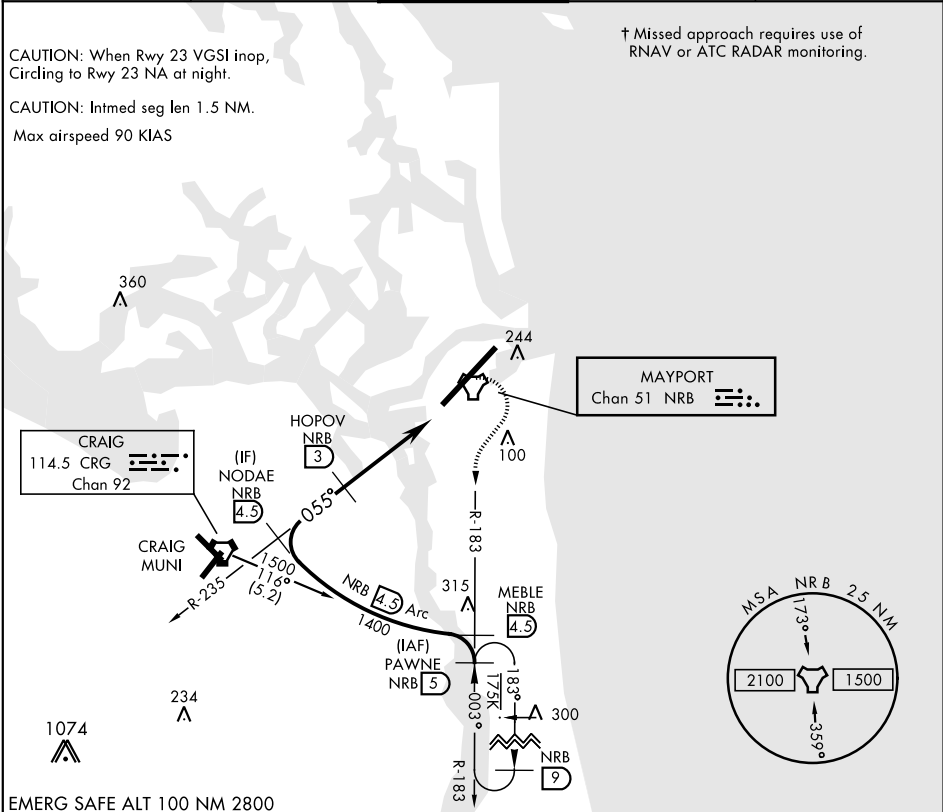


TACAN Chan 51	NRB	APCH CRS 055°	Rwy ldg TDZE 12 Arprt Elev 15	AL-722 [USN]	MAYPORT NS (ADM DAVID L. MC DONALD FLD) (KNRB)
-------------------------	-----	-------------------------	---	--------------	--

COPTER TACAN RWY 5

† MISSED APPROACH: Climb to 500. Then climbing right turn to 1500 via NRB TACAN R-183 to PAWNE and hold.			
--	--	--	--

ATIS ★ 236.775	JACKSONVILLE APP CON 124.9 308.4	MAYPORT TOWER ★ 118.75 239.3	GND CON 126.5 233.7	ASR/PAR
--------------------------	--	--	-------------------------------	---------



EMERG SAFE ALT 100 NM 2800			
VGSI and descent angle not coincident (VGSI Angle 3.00/TCH 48).			
PAWNE R-183 (5)	MELE R-183 (4.5)	NODAE R-235 (4.5)	HOPOV (3)
1500	1500	1400	900
003°	055°	003°	183°
3.30° TCH 48	Arc (4.5)	2 NM	TACAN
CATEGORY COPTER			
S-5	440-½	428	(500-½)
CIRCLING	560-1	545	(600-1)
REIL Rwy 5-23 HIRL Rwy 5-23			

COPTER TACAN RWY 5

SE-3, 31 DEC 2020 to 28 JAN 2021

SE-3, 31 DEC 2020 to 28 JAN 2021