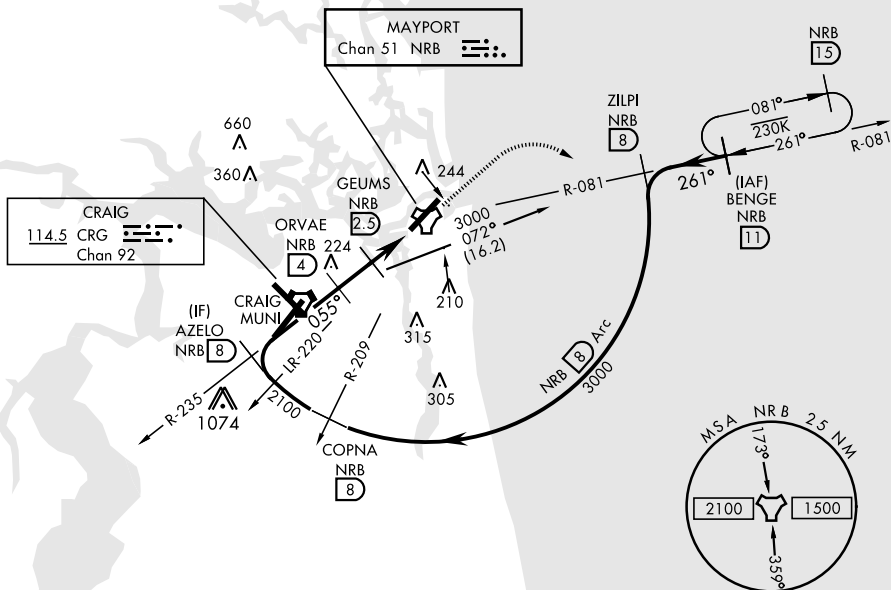


TACAN NRB Chan <b>51</b>	APCH CRS <b>055°</b>	Rwy Idg <b>8001</b> TDZE <b>12</b> Arpt Elev <b>15</b>	AL-722 [USN] MAYPORT NS (ADM DAVID L. MC DONALD FLD) (KNRB)		
▼			MISSED APPROACH: Climb to 500. Then climbing right turn to 3000 via NRB TACAN R-081 to BENGEE and hold, continue climb in hold to 3000.		
ATIS ★ <b>236.775</b>	JACKSONVILLE APP CON <b>124.9 308.4</b>		MAYPORT TOWER ★ <b>118.75 239.3</b>		GND CON <b>126.5 233.7</b>  ASR/PAR

**CAUTION:** Circling not authorized to Rwy 23 at night when VGSI inop on Rwy 23, unless the station has an approved observer watching for marine traffic in the St. John's River channel.

CAUTION: Intmed seg len 4 NM.

CRG feeder requires turn in hold.



EMERG SAFE ALT 100 NM 2800

