

TACAN NPA Chan <b>119</b>	APCH CRS <b>054°</b>	Rwy Idg <b>8000</b> TDZE <b>25</b> Apt Elev <b>28</b>	JAL-736 [USN] PENSACOLA NAS (FORREST SHERMAN FLD) (KNPA)
------------------------------	-------------------------	---	--

**MISSED APPROACH:** Climbing right turn to 1500 via NPA TACAN R-130 to CAGUM and hold.

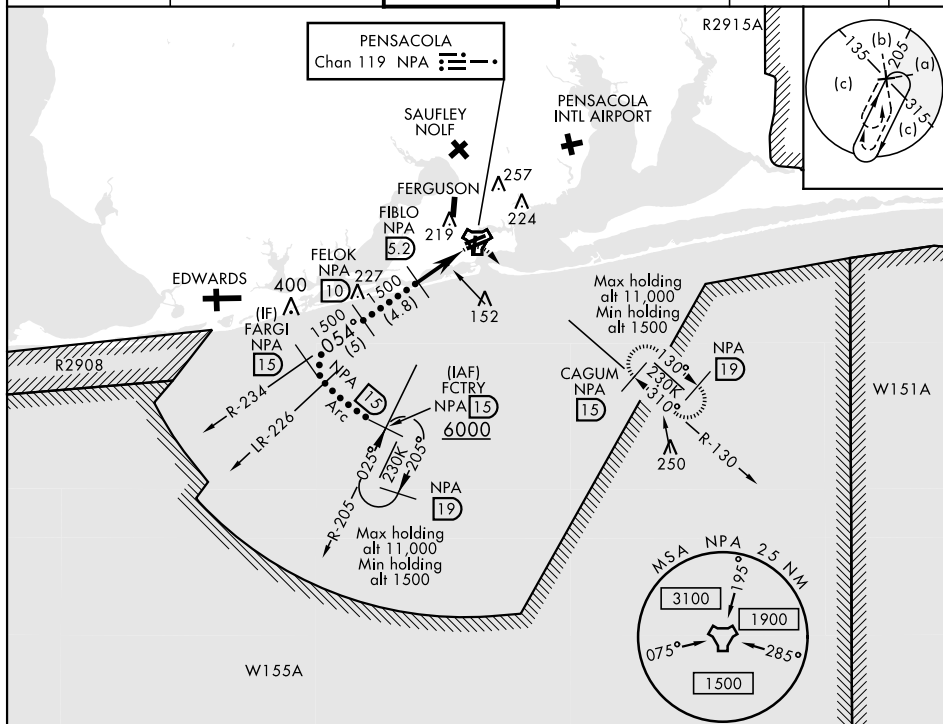
ATIS  
124.35 266.8

PENSACOLA APP CON  
120.65 270.8

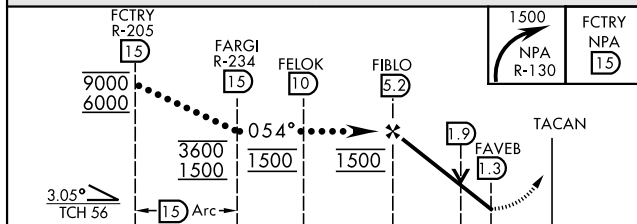
SHERMAN TOWER  
120 7 340 2

GND CON  
121 7 336 4

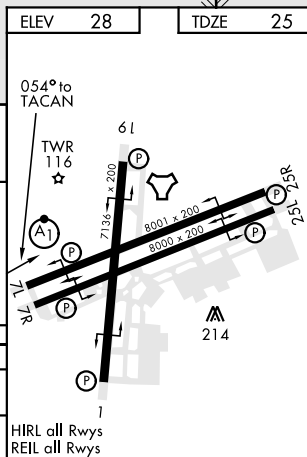
CLNC DEL  
134 1 268 7

ASR/  
PAR

EMERG SAFE ALT 100 NM 3100



CATEGORY	C	D	E
S-7R	440-1½	415 (500-1½)	
<b>C</b> CIRCLING	540-1½ 512 (600-1½)	580-2	552 (600-2)



## HI-TACAN RWY 7R