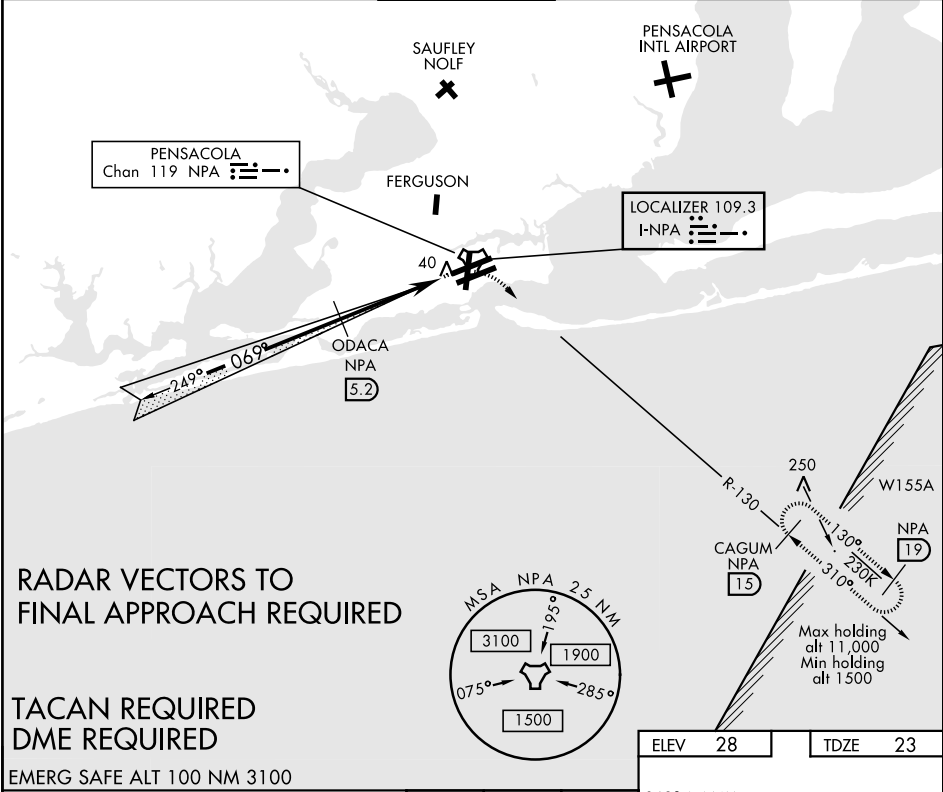


ILS Z or LOC/DME RWY 7L

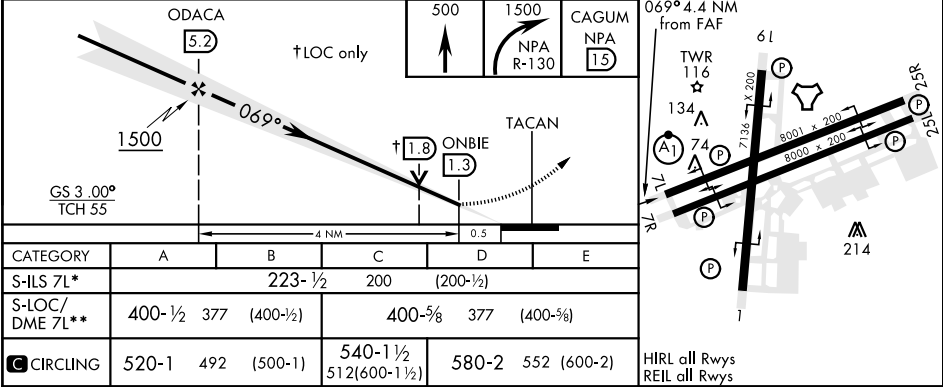
LOC I-NPA 109.3	APCH CRS 069°	Rwy Idg 8001 TDZE 23 Arpt Elev 28	AL-736 [USN]	PENSACOLA NAS (FORREST SHERMAN FLD) (KNPA)		
* When ALS inop, increase vis to ¾ mile. ** When ALS inop, increase vis to 1 mile			ALSF-1 	MISSED APPROACH: Climb to 500. Then climbing right turn to 1500 via NPA R-130 to CAGUM and hold.		
ATIS 124.35 266.8	PENSACOLA APP CON 120.65 270.8	SHERMAN TOWER 120.7 340.2	GND CON 121.7 336.4	CLNC DEL 134.1 268.7	ASR/ PAR	



RADAR VECTORS TO
FINAL APPROACH REQUIRED

TACAN REQUIRED
DME REQUIRED

EMERG SAFE ALT 100 NM 3100



ILS Z or LOC/DME RWY 7L

SE-3, 31 DEC 2020 to 28 JAN 2021

SE-3, 31 DEC 2020 to 28 JAN 2021